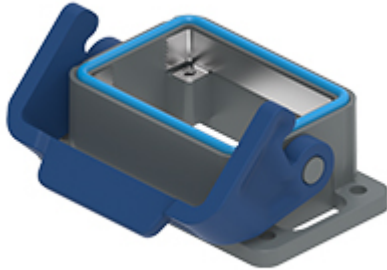


Part number

THIC 06 LB



Bulkhead mounting housing, T-TYPE/C series, with 1 lever, size "44.27", with integrated protective PE jumpers

Product description

Product type	Bulkhead mounting housing
Series	T-TYPE/C
Closing type	With 1 lever
Size	Size 44.27
Cable entry	Without cable entry
Specification	With integrated protective PE jumpers

Technical data

IP degree of protection	IP66 / IP69
--------------------------------	-------------

Further technical details

Weight	58,00 g
Operating temperature range (min, max)	-50°C ... +70°C

Material properties

Main material	Polypropylene (PP)
Other materials	Lever: Polypropylene (PP) Gasket: Silicone rubber PE jumpers: galvanized brass
Colour	RAL 7012 grey, RAL 5005 blue
RoHs conformity	Compliant
China RoHs - EFUP	E
REACH SVHC substances	No

General ordering information

EAN13 code	8015747278188
-------------------	---------------

Packaging Information

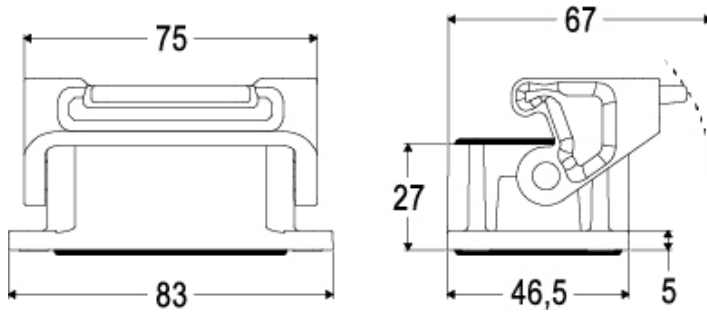
Packaging length	260,00 mm
Packaging height	190,00 mm
Packaging width	220,00 mm
Packaging weight	2,95 kg
Packaging volume	10,87 dm ³
Packaging description	Carton box
Packaging quantity	40 Pcs
Packaging EAN code	8015747016698
Sub-packaging weight	0,37 kg
Sub-packaging description	Plastic packaging
Sub-packaging quantity	5 Pcs
Sub-packaging EAN barcode	8015747291347

Part number

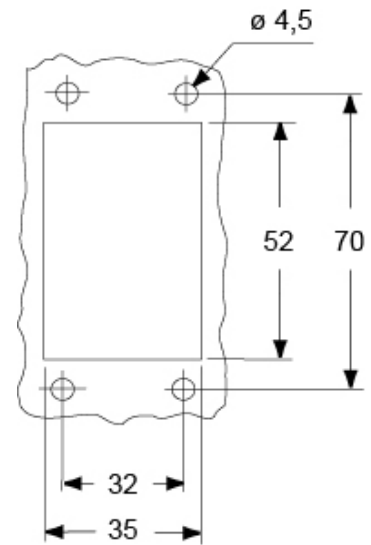
THIC 06 LB



Catalogue drawings



Catalogue drawings



Notes