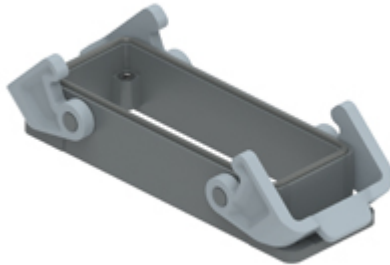


Part number

# TCHI 24 B



Bulkhead mounting housing, T-TYPE series, with 2 levers, size "104.27", with integrated protective PE jumpers

## Product description

<b>Product type</b>	Bulkhead mounting housing
<b>Series</b>	T-TYPE
<b>Closing type</b>	With 2 levers
<b>Size</b>	Size 104.27
<b>Cable entry</b>	Without cable entry
<b>Specification</b>	With integrated protective PE jumpers

## Technical data

<b>IP degree of protection</b>	IP65
--------------------------------	------

## Further technical details

<b>Weight</b>	0,20 g
<b>Operating temperature range (min, max)</b>	-40°C ... +90°C

## Material properties

<b>Main material</b>	Polypropylene (PP)
<b>Other materials</b>	Lever: Polyamide (PA) Gasket: polyurethane (PUR) PE jumpers: galvanized brass
<b>Colour</b>	RAL 7012 grey, RAL 7001 grey
<b>RoHs conformity</b>	Compliant
<b>China RoHs - EFUP</b>	E
<b>REACH SVHC substances</b>	No

## Approvals / Standards

<b>UL</b>	ECBT2
<b>cUL</b>	ECBT8

## General ordering information

<b>EAN13 code</b>	8015747277211
<b>eCl@ss 8.1</b>	27440202
<b>ETIM 7.0</b>	EC000437

## Packaging Information

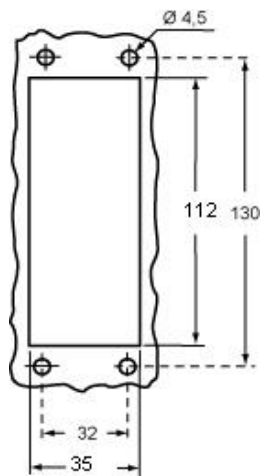
<b>Packaging length</b>	365,00 mm
<b>Packaging height</b>	195,00 mm
<b>Packaging width</b>	305,00 mm
<b>Packaging volume</b>	21,71 dm <sup>3</sup>
<b>Packaging description</b>	Carton box
<b>Packaging quantity</b>	40 Pcs
<b>Packaging EAN code</b>	8015747301107
<b>Sub-packaging description</b>	Plastic packaging
<b>Sub-packaging quantity</b>	5 Pcs
<b>Sub-packaging EAN barcode</b>	8015747301114

Part number

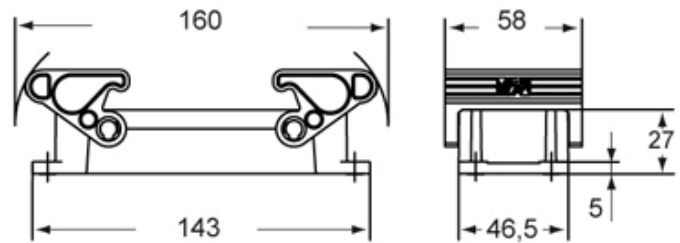
# TCHI 24 B



Catalogue drawings



Catalogue drawings



Notes