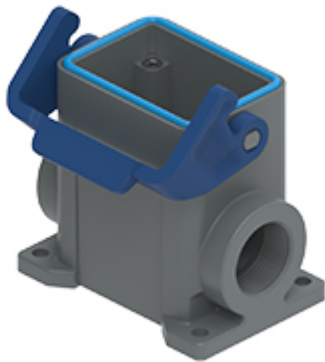


Part number

TAPC 06 L32



Surface mounting housing, T-TYPE/C series,
with 1 lever, M32 cable entry, size "44.27"

Product description		Material properties	
Product type	Surface mounting housing	Main material	Polypropylene (PP)
Series	T-TYPE/C	Other materials	Lever: Polypropylene (PP) Gasket: Silicone rubber
Closing type	With 1 lever	Colour	RAL 7012 grey, RAL 5005 blue
Size	Size 44.27	RoHS conformity	Compliant
Cable entry	With cable entry M32	China RoHS - EFUP	E
Technical data		REACH SVHC substances	No
IP degree of protection	IP66 / IP69	General ordering information	
Further technical details		EAN13 code	8015747211932
Weight	130,00 g	eCl@ss 8.1	27440202
Operating temperature range (min, max)	-50°C ... +70°C	ETIM 7.0	EC000437
		Packaging Information	
		Packaging length	180,00 mm
		Packaging height	210,00 mm
		Packaging width	330,00 mm
		Packaging weight	2,90 kg
		Packaging volume	12,47 dm ³
		Packaging description	Carton box
		Packaging quantity	20 Pcs
		Packaging EAN code	8015747212021
		Sub-packaging weight	0,73 kg
		Sub-packaging description	Plastic packaging
		Sub-packaging quantity	5 Pcs
		Sub-packaging EAN barcode	8015747212038

Part number

TAPC 06 L32



Catalogue drawings



Notes