


Part number

# SQE 3274.5



Interlocked switched socket-outlet, SQE series, 3 poles + PE, 7 h (black), 32 A, 480 ÷ 500 V, without fuse-carrier

#### Product description

|                       |   |
|-----------------------|---|
| <b>Product type</b>   | Interlocked switched socket-outlet  |
| <b>Series</b>         | SQE   |
| <b>N. of poles</b>    | 3 poles +  |
| <b>Clock position</b> | 7   |
| <b>Specification</b>  | Without fuse-carrier  |

#### Technical data

|                                |             |
|--------------------------------|-------------|
| <b>Current</b>                 | 32 A        |
| <b>Voltage</b>                 | 480 ÷ 500 V |
| <b>IP degree of protection</b> | IP55        |

#### Further technical details

|  |                 |
|--|-----------------|
| <b>Weight</b>                                  | 641,00 g        |
| <b>Operating temperature range (min, max)</b>  | -25°C ... +40°C |
| <b>IK rating (impact degree of protection)</b> | IK08            |

#### Material properties

|                              |  |
|------------------------------|--|
| <b>Colour</b>                | RAL 7035 grey, RAL 9005 black  |
| <b>RoHs conformity</b>       | Compliant with exemption 6(c): copper alloy containing up to 4% lead by weight |
| <b>China RoHs - EFUP</b>     | 50   |
| <b>REACH SVHC substances</b> | Yes<br>Lead  |
| <b>SCIP number</b>           | Ce861c8d-b979-403b-96d9-80aef6dc281d   |

#### Approvals / Standards

|                           |                     |
|---------------------------|---------------------|
| <b>Reference standard</b> | EN 60309-1, -2 e -4 |
|---------------------------|---------------------|

#### General ordering information

|                   |               |
|-------------------|---------------|
| <b>EAN13 code</b> | 8015747086967 |
|-------------------|---------------|

#### Packaging Information

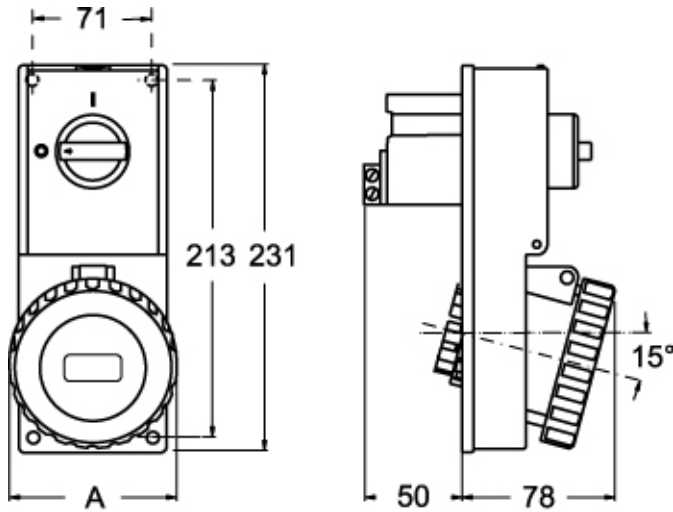
|                                  |                   |
|----------------------------------|-------------------|
| <b>Sub-packaging weight</b>      | 0,64 kg           |
| <b>Sub-packaging description</b> | Plastic packaging |
| <b>Sub-packaging quantity</b>    | 1 Pcs             |
| <b>Sub-packaging EAN barcode</b> | 8015747109383     |

Part number

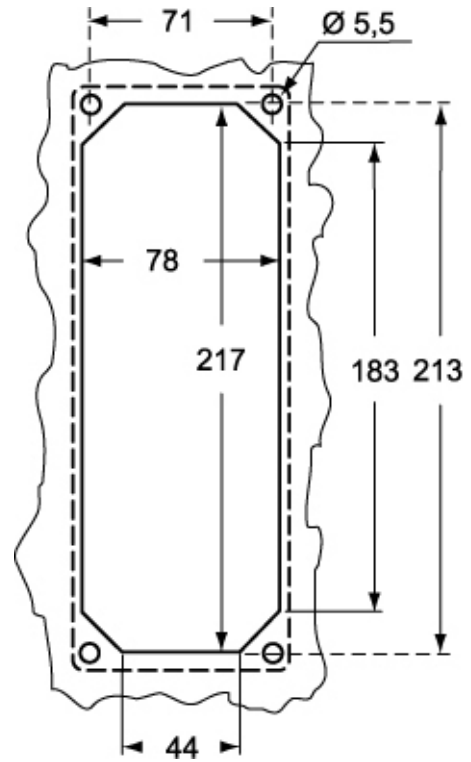
# SQE 3274.5



Catalogue drawings



Catalogue drawings



| SQE.5 |        | A   |
|-------|--------|-----|
| 32A   | 2P+⊕   | 92  |
|       | 3P+⊕   | 92  |
|       | 3P+N+⊕ | 100 |

Notes