


Part number

SQE 3265.5



Interlocked switched socket-outlet, SQE series, 3 poles + N + PE, 6 h (red), 32 A, 200/346 ÷ 240/415 V, without fuse-carrier

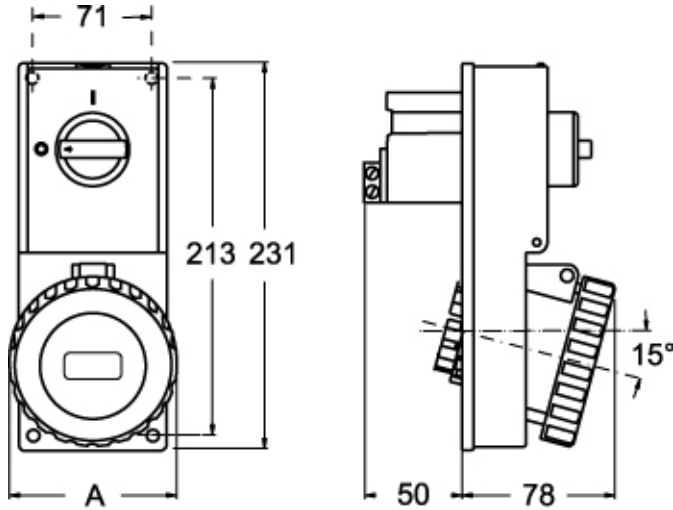
Product description		Material properties	
Product type	Interlocked switched socket-outlet	Colour	RAL 7035 grey, RAL 3000 red
Series	SQE		Compliant with exemption 6(c): copper alloy containing up to 4% lead by weight
N. of poles	3 poles + N + 	RoHs conformity	6(c): copper alloy containing up to 4% lead by weight
Clock position	6	China RoHs - EFUP	50
Size	Socket fixing centre distance 88 x 230 mm	REACH SVHC substances	Yes
Specification	Without fuse-carrier		Lead
Technical data		SCIP number	Ce861c8d-b979-403b-96d9-80aef6dc281d
Current	32 A	Approvals / Standards	
Voltage	200/346 ÷ 240/415 V	Reference standard	EN 60309-1, -2 e -4
IP degree of protection	IP55	General ordering information	
Further technical details		EAN13 code	8015747086882
Weight	668,00 g	Packaging Information	
Operating temperature range (min, max)	-25°C ... +40°C	Packaging length	380,00 mm
IK rating (impact degree of protection)	IK08	Packaging height	250,00 mm
		Packaging width	295,00 mm
		Packaging weight	6,11 kg
		Packaging volume	28,03 dm ³
		Packaging description	Carton box
		Packaging quantity	9 Pcs
		Packaging EAN code	8015747086899
		Sub-packaging weight	0,68 kg
		Sub-packaging description	Plastic packaging
		Sub-packaging quantity	1 Pcs
		Sub-packaging EAN barcode	8015747086905

Part number

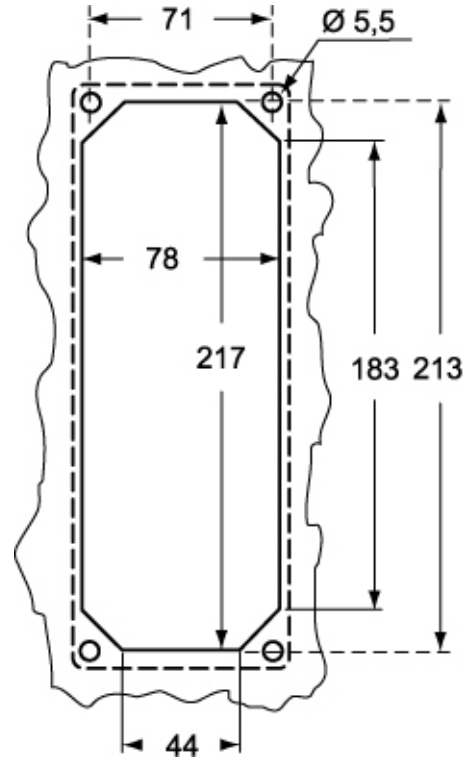
SQE 3265.5



Catalogue drawings



Catalogue drawings



SQE.5		A
32A	2P+⊕	92
	3P+⊕	92
	3P+N+⊕	100

Notes