


Part number

SQE 3245



Interlocked switched socket-outlet, SQE series, 3 poles + N + PE, 4 h (yellow), 32 A, 57/100 ÷ 75/130 V, without fuse-carrier

Product description

Product type	Interlocked switched socket-outlet
Series	SQE
N. of poles	3 poles + N + 
Clock position	4
Size	Socket fixing centre distance 88 x 230 mm
Specification	Without fuse-carrier

Technical data

Current	32 A
Voltage	57/100 ÷ 75/130 V
IP degree of protection	IP44

Further technical details

Weight	630,00 g
Operating temperature range (min, max)	-25°C ... +40°C
IK rating (impact degree of protection)	IK08

Material properties

Colour	RAL 7035 grey, RAL 1021 yellow
---------------	--------------------------------

Approvals / Standards

Reference standard	EN 60309-1, -2 e -4
---------------------------	---------------------

General ordering information

EAN13 code	8015747086530
-------------------	---------------

Packaging Information

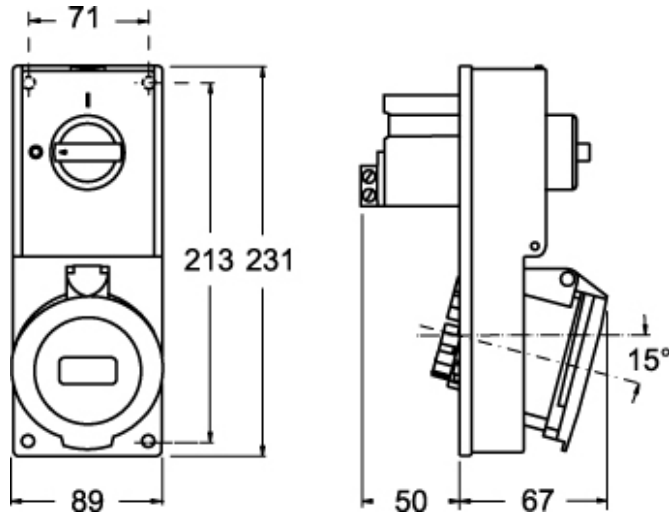
Sub-packaging weight	0,63 kg
Sub-packaging description	Carton box
Sub-packaging quantity	1 Pcs
Sub-packaging EAN barcode	8015747109369

Part number

SQE 3245



Catalogue drawings



Catalogue drawings



Notes