


Part number

SQE 3235.5



Interlocked switched socket-outlet, SQE series, 3 poles + N + PE, 3 h (red), 32 A, 220/380 V, without fuse-carrier

Product description

Product type	Interlocked switched socket-outlet
Series	SQE
N. of poles	3 poles + N + 
Clock position	3
Specification	Without fuse-carrier

Technical data

Current	32 A
Voltage	220/380V (50Hz) 250/440V (60Hz)
IP degree of protection	IP55

Further technical details

Operating temperature range (min, max)	-25°C ... +40°C
IK rating (impact degree of protection)	IK08

Material properties

Colour	RAL 7035 grey, RAL 3000 red
---------------	-----------------------------

Approvals / Standards

Reference standard	EN 60309-1, -2 e -4
---------------------------	---------------------

General ordering information

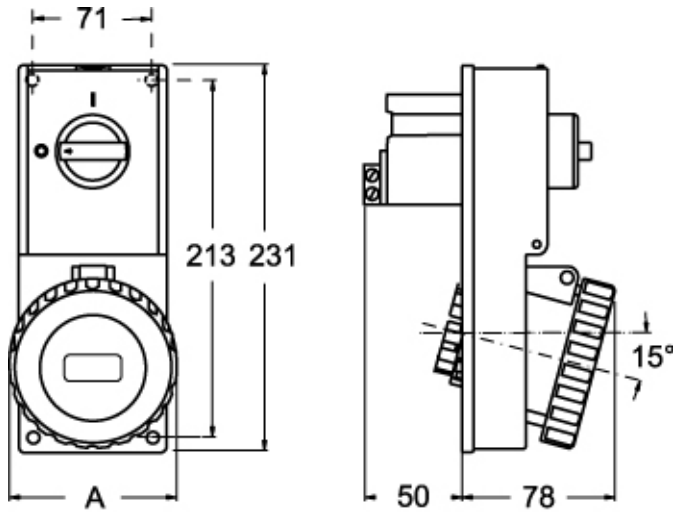
EAN13 code	8015747160056
-------------------	---------------

Part number

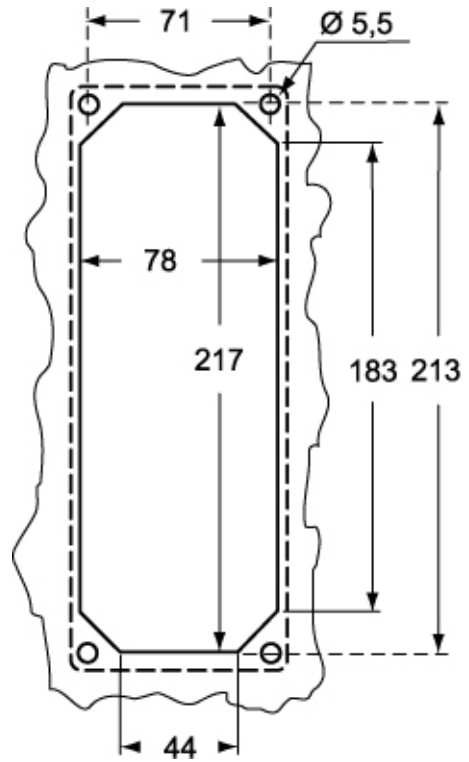
SQE 3235.5



Catalogue drawings



Catalogue drawings



SQE.5		A
32A	2P+⊕	92
	3P+⊕	92
	3P+N+⊕	100

Notes