


Part number

SIPW 3265 SM



Wall-mounting plug, PLUSO series, 3 poles + N + PE, 6 h (red), 32 A, 200/346 ÷ 240/415 V, with phase inverter

Product description		Material properties	
Product type	Plug Wall-mounting	Colour	RAL 7035 grey, RAL 3000 red
Series	SIPW...SM, PLUSO		Compliant with exemption 6(c): copper alloy containing up to 4% lead by weight
Connection type	Screw terminal connection	RoHs conformity	
N. of poles	3 poles + N + 	China RoHs - EFUP	50
Clock position	6	REACH SVHC substances	Yes Lead
Specification	With phase inverter	SCIP number	Ca7de37f-add8-4b77-9861-279c94903ade
Technical data		Approvals / Standards	
Current	32 A	Reference standard	EN 60309-1 and -2
Voltage	200/346 ÷ 240/415 V	General ordering information	
IP degree of protection	IP67	EAN13 code	8015747084055
Further technical details		Packaging Information	
Weight	380,00 g	Packaging weight	3,80 kg
Operating temperature range (min, max)	-25°C ... +40°C	Packaging volume	36,36 dm ³
		Packaging description	Carton box
		Packaging quantity	10 Pcs
		Packaging EAN code	8015747084062

Part number

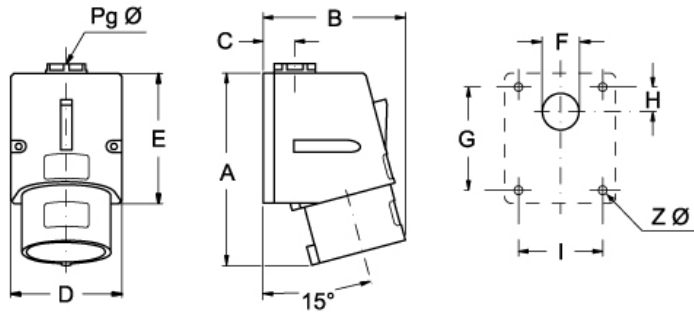
SIPW 3265 SM



Catalogue drawings

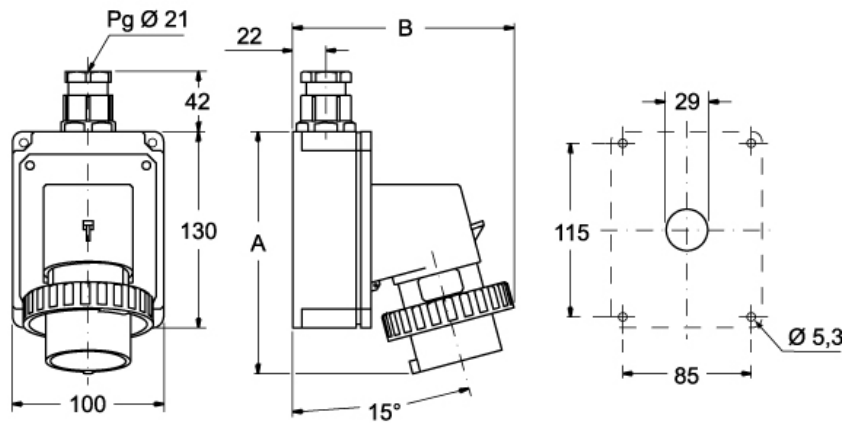
Catalogue drawings

SIP ... SM



	A	B	C	D	E	F	G	H	I	ZØ	PgØ
16A	121	90	20	70	82	23	65	16	53	4,3	16
32A	147	95	24	86	104	29	79	17	61	6,3	21

SIPW ... SM



	A	B
16A	164	145
32A	178	160

Notes