

Part number

SIP 1665 SM



Wall-mounting plug, PLUSO series, 3 poles + N + PE, 6 h (red), 16 A, 200/346 ÷ 240/415 V, with phase inverter

Product description

Product type	Plug Wall-mounting
Series	SIP...SM, PLUSO
Connection type	Screw terminal connection
N. of poles	3 poles + N +
Clock position	6
Specification	With phase inverter

Technical data

Current	16 A
Voltage	200/346 ÷ 240/415 V
IP degree of protection	IP44

Further technical details

Weight	184,00 g
Operating temperature range (min, max)	-25°C ... +40°C

Material properties

Colour	RAL 7035 grey, RAL 3000 red
RoHs conformity	Compliant with exemption 6(c); copper alloy containing up to 4% lead by weight
China RoHs - EFUP	50
REACH SVHC substances	Yes Lead
SCIP number	Ca7de37f-add8-4b77-9861-279c94903ade

Approvals / Standards

Reference standard	EN 60309-1 and -2
---------------------------	-------------------

General ordering information

EAN13 code	8015747083874
-------------------	---------------

Packaging Information

Packaging length	340,00 mm
Packaging height	135,00 mm
Packaging width	200,00 mm
Packaging weight	2,04 kg
Packaging volume	9,18 dm ³
Packaging description	Carton box
Packaging quantity	10 Pcs
Packaging EAN code	8015747083881

Part number

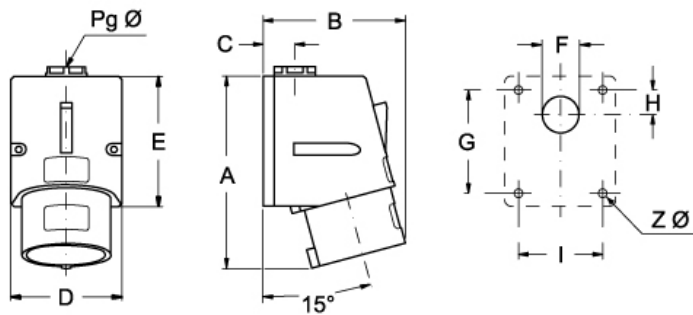
SIP 1665 SM



Catalogue drawings

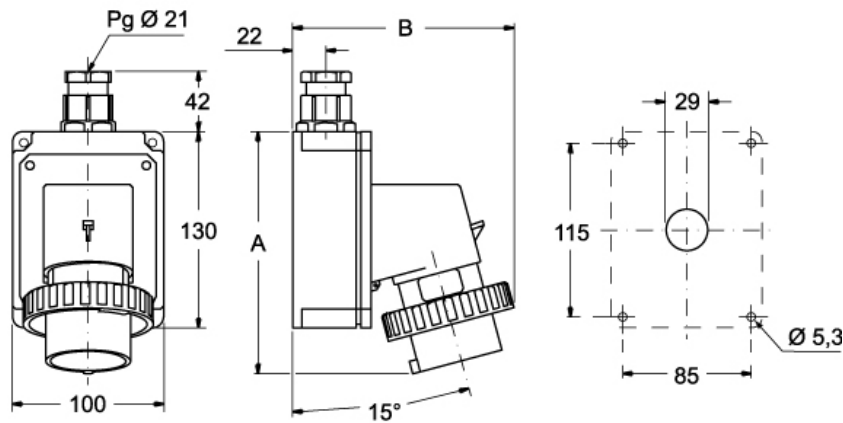
Catalogue drawings

SIP ... SM



	A	B	C	D	E	F	G	H	I	Z Ø	Pg Ø
16A	121	90	20	70	82	23	65	16	53	4,3	16
32A	147	95	24	86	104	29	79	17	61	6,3	21

SIPW ... SM



	A	B
16A	164	145
32A	178	160

Notes