


Part number

PEW 32115 SM



Wall-mounting plug, PLUSO series, 3 poles + N + PE, 11 h (red), 32 A, 250/440 ÷ 265/460 V

Product description

| | |
|-----------------------|---|
| Product type | Plug Wall-mounting |
| Series | PEW...SM, PLUSO |
| N. of poles | 3 poles + N +  |
| Clock position | 11 |

Technical data

| | |
|--------------------------------|---------------------|
| Current | 32 A |
| Voltage | 250/440V ÷ 265/460V |
| IP degree of protection | IP67 |

Further technical details

| | |
|---|-----------------|
| Weight | 550,00 g |
| Operating temperature range (min, max) | -25°C ... +40°C |

Material properties

| | |
|------------------------------|--|
| Colour | RAL 7035 grey, RAL 3000 red |
| RoHs conformity | Compliant with exemption 6(c): copper alloy containing up to 4% lead by weight |
| China RoHs - EFUP | 50 |
| REACH SVHC substances | Yes Lead |
| SCIP number | Ca7de37f-add8-4b77-9861-279c94903ade |

Approvals / Standards

| | |
|---------------------------|-------------------|
| Reference standard | EN 60309-1 and -2 |
|---------------------------|-------------------|

General ordering information

| | |
|-------------------|---------------|
| EAN13 code | 8015747157476 |
|-------------------|---------------|

Packaging Information

| | |
|------------------------------|-----------------------|
| Packaging weight | 5,50 kg |
| Packaging volume | 36,36 dm ³ |
| Packaging description | Carton box |
| Packaging quantity | 10 Pcs |
| Packaging EAN code | 8015747259729 |

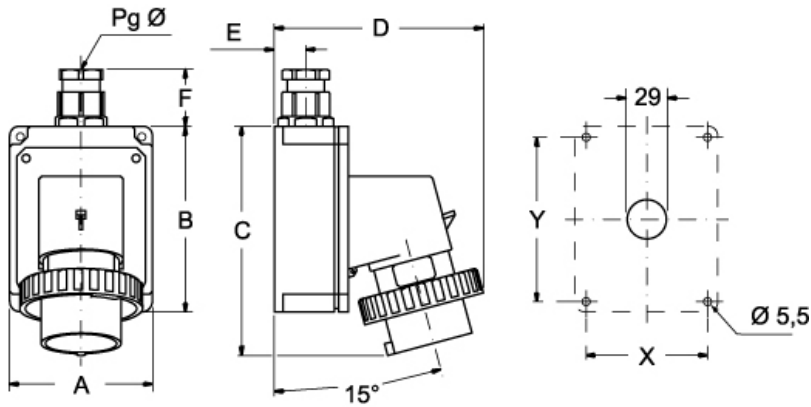
Part number

PEW 32115 SM



Catalogue drawings

(16 / 32A) PEW ... SM



| PEW ... SM | A | B | C | D | E | F | X | Y | Pg Ø |
|-----------------|-----|-----|-----|-----|----|----|----|-----|------|
| 16A 2P+⊕ | 75 | 115 | 144 | 126 | 19 | 35 | 65 | 105 | 16 |
| 3P+⊕ | 75 | 115 | 144 | 134 | 19 | 35 | 65 | 105 | 16 |
| 3P+N+⊕ | 100 | 130 | 164 | 145 | 22 | 42 | 85 | 115 | 21 |
| 32A 2P+⊕ | 100 | 130 | 178 | 154 | 22 | 42 | 85 | 115 | 21 |
| 3P+⊕ | 100 | 130 | 178 | 154 | 22 | 42 | 85 | 115 | 21 |
| 3P+N+⊕ | 100 | 130 | 178 | 160 | 22 | 42 | 85 | 115 | 21 |

Notes