


Part number

PEW 1634 SM



Wall-mounting plug, PLUSO series, 3 poles + PE, 3 h (red), 16 A, 380 ÷ 380 V

Product description

Product type	Plug Wall-mounting
Series	PEW...SM, PLUSO
N. of poles	3 poles + 
Clock position	3

Technical data

Current	16 A
Voltage	380V (50Hz.) 440V (60Hz.)
IP degree of protection	IP67

Further technical details

Operating temperature range (min, max)	-25°C ... +40°C
-----------------------------------------------	-----------------

Material properties

Colour	RAL 7035 grey, RAL 3000 red
---------------	-----------------------------

Approvals / Standards

Reference standard	EN 60309-1 and -2
---------------------------	-------------------

General ordering information

EAN13 code	8015747157032
-------------------	---------------

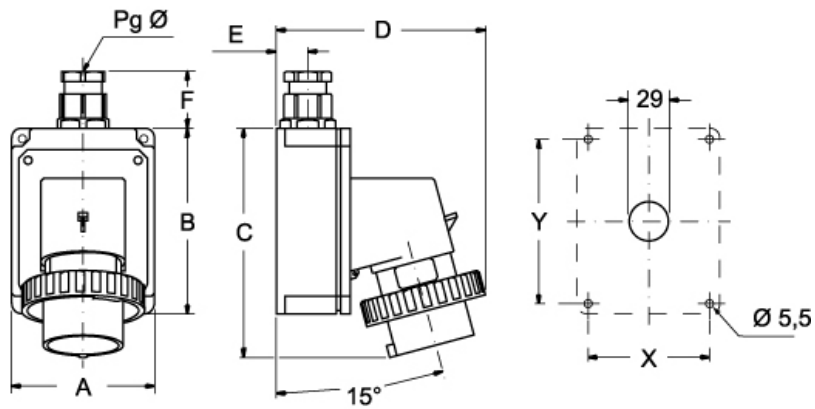
Part number

PEW 1634 SM



Catalogue drawings

(16 / 32A) PEW ... SM



PEW ... SM	A	B	C	D	E	F	X	Y	Pg Ø
16A 2P+⊕	75	115	144	126	19	35	65	105	16
3P+⊕	75	115	144	134	19	35	65	105	16
3P+N+⊕	100	130	164	145	22	42	85	115	21
32A 2P+⊕	100	130	178	154	22	42	85	115	21
3P+⊕	100	130	178	154	22	42	85	115	21
3P+N+⊕	100	130	178	160	22	42	85	115	21

Notes