


Part number

# PE 3264 SM



Wall-mounting plug, PLUSO series, 3 poles + PE, 6 h (red), 32 A, 380 ÷ 415 V

#### Product description

<b>Product type</b>	Plug Wall-mounting
<b>Series</b>	PE...SM, PLUSO
<b>N. of poles</b>	3 poles + 
<b>Clock position</b>	6

#### Technical data

<b>Current</b>	32 A
<b>Voltage</b>	380 ÷ 415 V
<b>IP degree of protection</b>	IP44

#### Further technical details

<b>Weight</b>	260,00 g
<b>Operating temperature range (min, max)</b>	-25°C ... +40°C

#### Material properties

<b>Colour</b>	RAL 7035 grey, RAL 3000 red
<b>RoHs conformity</b>	Compliant with exemption 6(c): copper alloy containing up to 4% lead by weight
<b>China RoHs - EFUP</b>	50
<b>REACH SVHC substances</b>	Yes Lead
<b>SCIP number</b>	Ca7de37f-add8-4b77-9861-279c94903ade

#### Approvals / Standards

<b>Reference standard</b>	EN 60309-1 and -2
---------------------------	-------------------

#### General ordering information

<b>EAN13 code</b>	8015747067416
-------------------	---------------

#### Packaging Information

<b>Packaging length</b>	330,00 mm
<b>Packaging height</b>	175,00 mm
<b>Packaging width</b>	295,00 mm
<b>Packaging weight</b>	2,90 kg
<b>Packaging volume</b>	17,04 dm <sup>3</sup>
<b>Packaging description</b>	Carton box
<b>Packaging quantity</b>	10 Pcs
<b>Packaging EAN code</b>	8015747067423

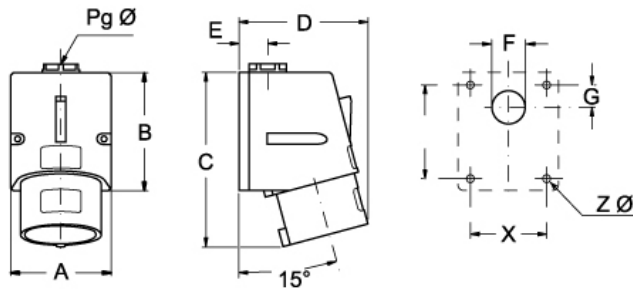
Part number

# PE 3264 SM



Catalogue drawings

(16 / 32A) PE ... SM



PE ... SM	A	B	C	D	E	F	G	X	Y	Z Ø	Pg Ø
<b>16A</b> 2P+⊕	70	82	115	75	20	23	16	53	65	4,5	16
3P+⊕	70	82	117	75	20	23	16	53	65	4,5	16
3P+N+⊕	70	82	121	90	20	23	16	53	65	4,5	16
<b>32A</b> 2P+⊕	86	104	145	95	24	29	17	61	79	6,5	21
3P+⊕	86	104	145	95	24	29	17	61	79	6,5	21
3P+N+⊕	86	104	147	95	24	29	17	61	79	6,5	21

Notes