

Part number

PB 32002 PI



Flush-mounting socket outlet, PLUSO series, 2 poles, 32 A, 20 ÷ 25 V, straight

Product description		Material properties	
Product type	Socket Flush-mounting	Colour	RAL 7035 grey, RAL 4001 lilac
Series	PB...PI, PLUSO	RoHs conformity	Compliant with exemption 6(c): copper alloy containing up to 4% lead by weight
N. of poles	2 poles	China RoHs - EFUP	50
Clock position	No key way	REACH SVHC substances	Yes Lead
Specification	Straight	SCIP number	Ca7de37f-add8-4b77-9861-279c94903ade
Technical data		Approvals / Standards	
Current	32 A	Reference standard	EN 60309-1 and -2
Voltage	20 ÷ 25 V	General ordering information	
IP degree of protection	IP44	EAN13 code	8015747061759
Further technical details		Packaging Information	
Weight	96,00 g	Packaging length	195,00 mm
Operating temperature range (min, max)	-25°C ... +40°C	Packaging height	135,00 mm
		Packaging width	155,00 mm
		Packaging weight	1,09 kg
		Packaging volume	4,08 dm ³
		Packaging description	Carton box
		Packaging quantity	10 Pcs
		Packaging EAN code	8015747221665

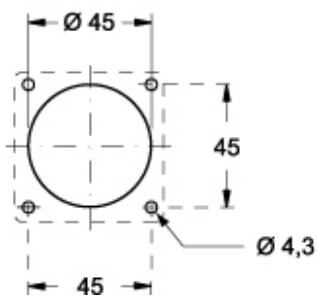
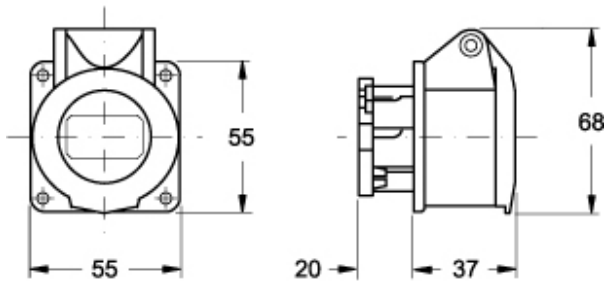
Part number

PB 32002 PI



Catalogue drawings

(16 / 32A) PB ... PI



Notes