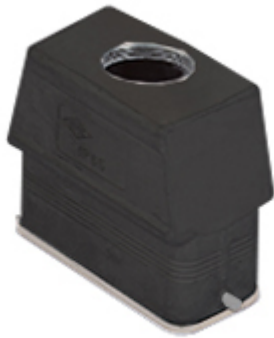


Part number

# MZFWW 25 L25



Hood, W-TYPE series, with 2 pegs, M25 top cable entry without adapter, size "66.16", high construction

Product description		Material properties	
<b>Product type</b>	Hood	<b>Other materials</b>	Gasket: FKM
<b>Series</b>	W-TYPE	<b>Colour</b>	RAL 9005 black
<b>Closing type</b>	With 2 pegs	<b>RoHs conformity</b>	Compliant
<b>Size</b>	Size 66.16	<b>China RoHs - EFUP</b>	E
<b>Cable entry</b>	Top cable entry M25	<b>REACH SVHC substances</b>	No
<b>Specification</b>	High construction	<b>Approvals / Standards</b>	
<b>Technical data</b>		<b>Certifications</b>	DNV, BV
<b>IP degree of protection</b>	IP65 / IP66 / IP69	<b>UL</b>	ECBT2
<b>Further technical details</b>		<b>cUL</b>	ECBT8
<b>Weight</b>	145,00 g	<b>General ordering information</b>	
<b>Operating temperature range (min, max)</b>	-40°C...+125°C	<b>EAN13 code</b>	8015747154161
		<b>Packaging Information</b>	
		<b>Packaging weight</b>	1,62 kg
		<b>Packaging description</b>	Carton box
		<b>Packaging quantity</b>	10 Pcs
		<b>Packaging EAN code</b>	8015747289429
		<b>Sub-packaging length</b>	260,00 mm
		<b>Sub-packaging height</b>	115,00 mm
		<b>Sub-packaging width</b>	120,00 mm
		<b>Sub-packaging weight</b>	0,16 kg
		<b>Sub-packaging volume</b>	3,59 dm <sup>3</sup>
		<b>Sub-packaging description</b>	Plastic packaging
		<b>Sub-packaging quantity</b>	1 Pcs
		<b>Sub-packaging EAN barcode</b>	8015747290166

Part number

**MZFWW 25 L25**



---

Notes