

Part number

MZ7P 25LS225



Surface mounting housing, CZ7 series, with 1 lever, M25 x 2 cable entry, size "66.16", high construction, with metal cover

Product description	
Product type	Surface mounting housing
Series	CZ7
Closing type	With 1 lever
Size	Size 66.16
Cable entry	With cable entry M25 x 2
Specification	High construction, with metal cover
Technical data	
IP degree of protection	IP66 / IP67 / IP69
Further technical details	
Weight	230,00 g
Operating temperature range (min, max)	-40°C...+125°C

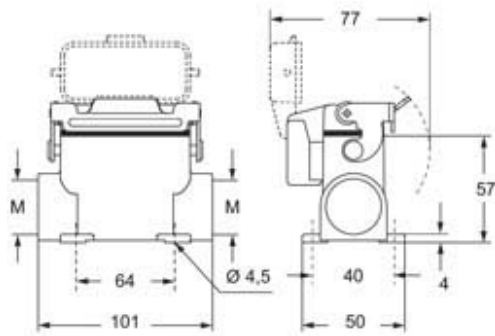
Material properties	
Other materials	Lever: Stainless steel
Colour	RAL 7040 grey
RoHs conformity	Compliant
China RoHs - EFUP	E
REACH SVHC substances	No
Approvals / Standards	
UL	ECBT2
cUL	ECBT8
General ordering information	
EAN13 code	8015747238670
eCl@ss 8.1	27440202
ETIM 7.0	EC000437
Packaging Information	
Packaging length	190,00 mm
Packaging height	125,00 mm
Packaging width	330,00 mm
Packaging weight	2,50 kg
Packaging volume	7,84 dm ³
Packaging description	Carton box
Packaging quantity	10 Pcs
Packaging EAN code	8015747238700
Sub-packaging weight	1,25 kg
Sub-packaging description	Plastic packaging
Sub-packaging quantity	5 Pcs
Sub-packaging EAN barcode	8015747238717

Part number

MZ7P 25LS225



Catalogue drawings



Notes