

Part number

# MK IAPN25



Angled Bulkhead mounting housing, CK series, with 1 lever, M25 cable entry, size "21.21", fixing by 4 screws, black colour

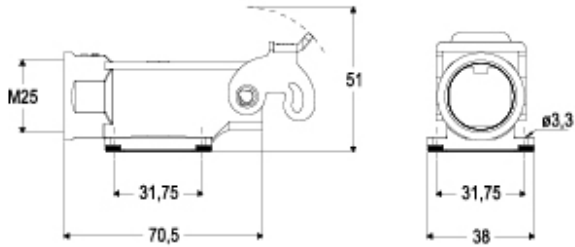
Product description		Material properties	
<b>Product type</b>	Angled bulkhead mounting housing	<b>Other materials</b>	Lever: Polyamide (PA) Gasket: TPE
<b>Series</b>	CK	<b>Colour</b>	RAL 9005 black
<b>Closing type</b>	With 1 lever	<b>RoHs conformity</b>	Compliant
<b>Size</b>	Size "21.21"	<b>China RoHs - EFUP</b>	E
<b>Cable entry</b>	With cable entry M25	<b>REACH SVHC substances</b>	No
<b>Specification</b>	Fixing by 4 screws	<b>General ordering information</b>	
<b>Technical data</b>		<b>EAN13 code</b>	8015747301732
<b>IP degree of protection</b>	IP44 - IP66 / IP67 / IP69 with CKR 65 (D)	<b>eCl@ss 8.1</b>	27440202
<b>Further technical details</b>		<b>ETIM 7.0</b>	EC000437
<b>Weight</b>	23,50 g	<b>Packaging Information</b>	
<b>Operating temperature range (min, max)</b>	-40°C...+125°C	<b>Packaging length</b>	375,00 mm
		<b>Packaging height</b>	230,00 mm
		<b>Packaging width</b>	205,00 mm
		<b>Packaging weight</b>	2,77 kg
		<b>Packaging volume</b>	17,68 dm <sup>3</sup>
		<b>Packaging description</b>	Carton box
		<b>Packaging quantity</b>	100 Pcs
		<b>Packaging EAN code</b>	8015747301770
		<b>Sub-packaging weight</b>	0,28 kg
		<b>Sub-packaging description</b>	Carton box
		<b>Sub-packaging quantity</b>	10 Pcs
		<b>Sub-packaging EAN barcode</b>	8015747301787

Part number

# MK IAPN25



## Catalogue drawings



---

Notes