

Part number

# MK IAPN20



Angled Bulkhead mounting housing, CK series, with 1 lever, M20 cable entry, size "21.21", black colour

#### Product description

<b>Product type</b>	Angled bulkhead mounting housing
<b>Series</b>	CK
<b>Closing type</b>	With 1 lever
<b>Size</b>	Size "21.21"
<b>Cable entry</b>	With cable entry M20
<b>Specification</b>	Black colour

#### Technical data

**IP degree of protection** IP44 - IP66 / IP67 / IP69 with CKR 65 (D)

#### Further technical details

<b>Weight</b>	13,70 g
<b>Operating temperature range (min, max)</b>	-40°C...+125°C

#### Material properties

<b>Other materials</b>	Lever: Polyamide (PA) Gasket: TPE
<b>Colour</b>	RAL 9005 black
<b>RoHs conformity</b>	Compliant
<b>China RoHs - EFUP</b>	E
<b>REACH SVHC substances</b>	No

#### Approvals / Standards

<b>UL</b>	ECBT2
<b>cUL</b>	ECBT8

#### General ordering information

<b>EAN13 code</b>	8015747056502
<b>eCl@ss 8.1</b>	27440202
<b>ETIM 7.0</b>	EC000437

#### Packaging Information

<b>Packaging length</b>	360,00 mm
<b>Packaging height</b>	165,00 mm
<b>Packaging width</b>	315,00 mm
<b>Packaging weight</b>	2,46 kg
<b>Packaging volume</b>	18,71 dm <sup>3</sup>
<b>Packaging description</b>	Carton box
<b>Packaging quantity</b>	100 Pcs
<b>Packaging EAN code</b>	8015747056519
<b>Sub-packaging weight</b>	0,25 kg
<b>Sub-packaging description</b>	Carton box
<b>Sub-packaging quantity</b>	10 Pcs
<b>Sub-packaging EAN barcode</b>	8015747056526

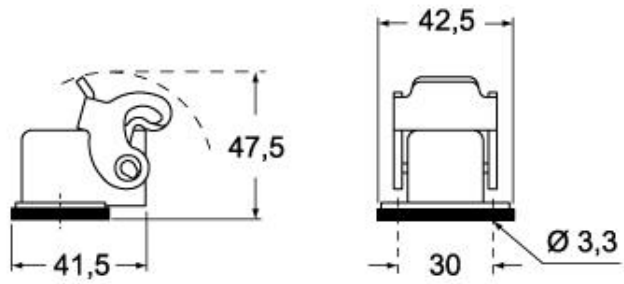
Part number

# MK IAPN20

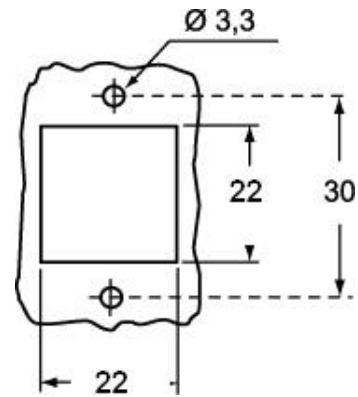


Catalogue drawings

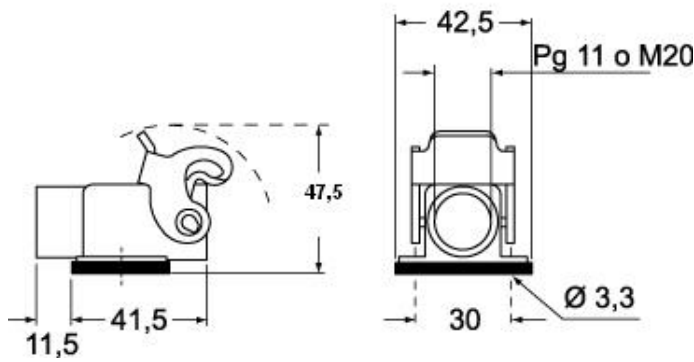
**CK IA(N)**



Catalogue drawings



**CK IAP(N)S - MK IAP (N)**



Notes