

Part number

# MHPXW 50.32



Surface mounting housing, W-TYPE series,  
with 2 levers, M32 cable entry, size "66.40"

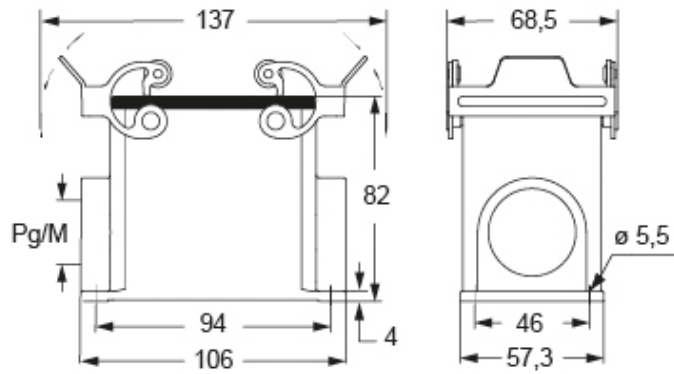
Product description		Material properties	
<b>Product type</b>	Surface mounting housing	<b>Other materials</b>	Lever: Stainless steel, polyamide (PA)
<b>Series</b>	W-TYPE	<b>Colour</b>	RAL 9005 black
<b>Closing type</b>	With 2 levers	<b>RoHs conformity</b>	Compliant
<b>Size</b>	Size "66.40"	<b>China RoHs - EFUP</b>	E
<b>Cable entry</b>	With cable entry M32	<b>REACH SVHC substances</b>	No
Technical data		Approvals / Standards	
<b>IP degree of protection</b>	IP65 / IP66 / IP69	<b>Certifications</b>	DNV, BV
Further technical details		<b>UL</b>	ECBT2
<b>Operating temperature range (min, max)</b>	-40°C...+125°C	<b>cUL</b>	ECBT8
		General ordering information	
		<b>EAN13 code</b>	8015747276436
		<b>eCl@ss 8.1</b>	27440202
		<b>ETIM 7.0</b>	EC000437

Part number

# MHPXW 50.32



## Catalogue drawings



---

Notes