

Part number

MHPX 32 LP40



Surface mounting housing, C-TYPE series, with 1 lever, M40 cable entry, size "77.62", with plastic cover

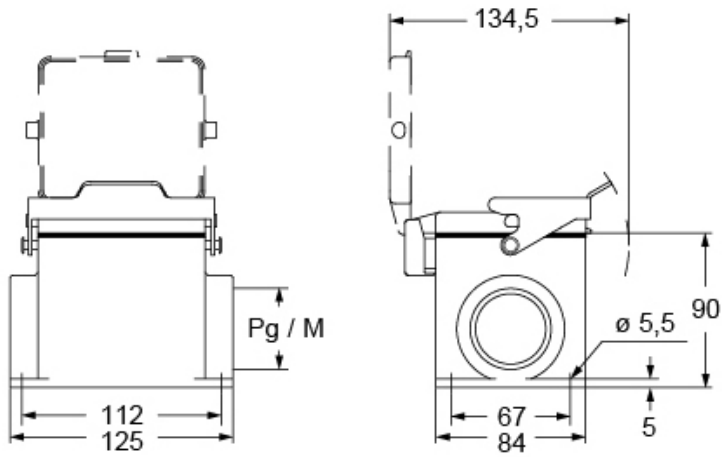
| Product description | | Material properties | |
|---|--------------------------|----------------------------------|---------------------------------------|
| Product type | Surface mounting housing | Other materials | Lever: Stainless steel Gasket: NBR |
| Series | C-TYPE | Colour | RAL 7040 grey |
| Closing type | With 1 lever | RoHs conformity | Compliant |
| Size | Size 77.62 | China RoHs - EFUP | E |
| Cable entry | With cable entry M40 | REACH SVHC substances | No |
| Specification | With plastic cover | | |
| Technical data | | Approvals / Standards | |
| IP degree of protection | IP65 | Certifications | DNV, BV |
| | | UL | ECBT2 |
| | | cUL | ECBT8 |
| Further technical details | | General ordering information | |
| Weight | 1.246,00 g | EAN13 code | 8015747267267 |
| Operating temperature range (min, max) | -40°C...+125°C | eCl@ss 8.1 | 27440202 |
| | | ETIM 7.0 | EC000437 |
| | | Packaging Information | |
| | | Packaging length | 250,00 mm |
| | | Packaging height | 145,00 mm |
| | | Packaging width | 300,00 mm |
| | | Packaging weight | 5,21 kg |
| | | Packaging volume | 10,88 dm ³ |
| | | Packaging description | Carton box |
| | | Packaging quantity | 4 Pcs |
| | | Packaging EAN code | 8015747292139 |
| | | Sub-packaging weight | 1,30 kg |
| | | Sub-packaging description | Plastic packaging |
| | | Sub-packaging quantity | 1 Pcs |
| | | Sub-packaging EAN barcode | 8015747292146 |

Part number

MHPX 32 LP40



Catalogue drawings



Notes