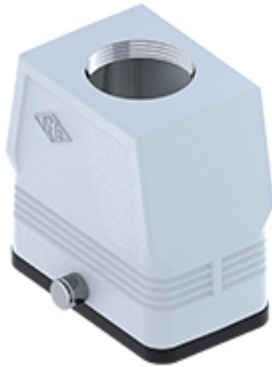


Part number

MFV 10 GYC40



Hood, CENTRAL LEVER series, with 2 pegs, M40 top cable entry without adapter, size "57.27", high construction

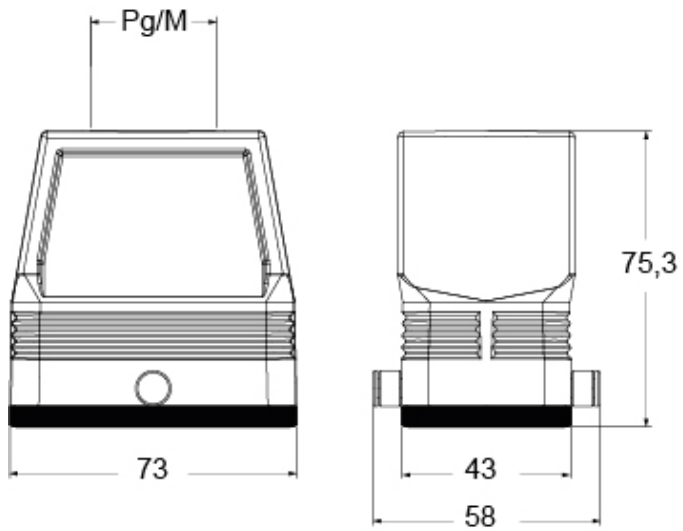
| Product description | | Material properties | |
|---|------------------------|----------------------------------|----------------------|
| Product type | Hood | Other materials | Gasket: NBR |
| Series | CENTRAL LEVER | Colour | RAL 7040 grey |
| Closing type | With 2 pegs | RoHs conformity | Compliant |
| Size | Size 57.27 | China RoHs - EFUP | E |
| Cable entry | Top cable entry M40 | REACH SVHC substances | No |
| Specification | High construction | Approvals / Standards | |
| Technical data | | UL | ECBT2 |
| IP degree of protection | IP65 | cUL | ECBT8 |
| Further technical details | | General ordering information | |
| Weight | 0,50 g | EAN13 code | 8015747264914 |
| Operating temperature range (min, max) | -40°C...+125°C | eCl@ss 8.1 | 27440202 |
| | | ETIM 7.0 | EC000437 |
| | | Packaging Information | |
| | | Packaging length | 150,00 mm |
| | | Packaging height | 160,00 mm |
| | | Packaging width | 300,00 mm |
| | | Packaging volume | 7,20 dm ³ |
| | | Packaging description | Carton box |
| | | Packaging quantity | 20 Pcs |
| | | Packaging EAN code | 8015747264921 |
| | | Sub-packaging description | Plastic packaging |
| | | Sub-packaging quantity | 5 Pcs |
| | | Sub-packaging EAN barcode | 8015747264938 |

Part number

MFV 10 GYC40



Catalogue drawings



Notes