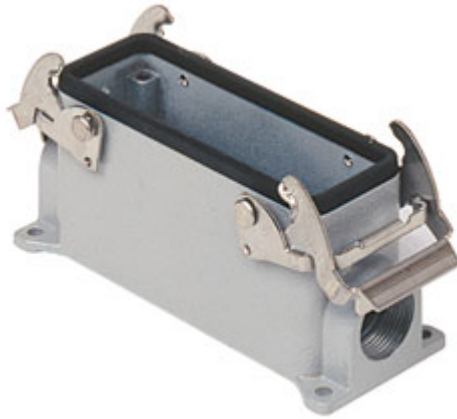


Part number

# M7P 16.25



Surface mounting housing, V-TYPE series, with 2 levers, M25 cable entry, size "77.27"

#### Product description

|                     |                          |
|---------------------|--------------------------|
| <b>Product type</b> | Surface mounting housing |
| <b>Series</b>       | V-TYPE                   |
| <b>Closing type</b> | With 2 levers            |
| <b>Size</b>         | Size 77.27               |
| <b>Cable entry</b>  | With cable entry<br>M25  |

#### Technical data

**IP degree of protection** IP66 / IP67 / IP69

#### Further technical details

|   |                |
|---|----------------|
| <b>Weight</b>                                 | 344,00 g       |
| <b>Operating temperature range (min, max)</b> | -40°C...+125°C |

#### Material properties

|                              |                                       |
|------------------------------|---------------------------------------|
| <b>Other materials</b>       | Lever: Stainless steel<br>Gasket: NBR |
| <b>Colour</b>                | RAL 7040 grey                         |
| <b>RoHs conformity</b>       | Compliant                             |
| <b>China RoHs - EFUP</b>     | E                                     |
| <b>REACH SVHC substances</b> | No                                    |

#### Approvals / Standards

|                       |         |
|-----------------------|---------|
| <b>Certifications</b> | DNV, BV |
| <b>UL</b>             | ECBT2   |
| <b>cUL</b>            | ECBT8   |

#### General ordering information

|                   |               |
|-------------------|---------------|
| <b>EAN13 code</b> | 8015747093583 |
| <b>eCl@ss 8.1</b> | 27440202      |
| <b>ETIM 7.0</b>   | EC000437      |

#### Packaging Information

|                                  |                       |
|----------------------------------|-----------------------|
| <b>Packaging length</b>          | 295,00 mm             |
| <b>Packaging height</b>          | 160,00 mm             |
| <b>Packaging width</b>           | 300,00 mm             |
| <b>Packaging weight</b>          | 7,13 kg               |
| <b>Packaging volume</b>          | 14,16 dm <sup>3</sup> |
| <b>Packaging description</b>     | Carton box            |
| <b>Packaging quantity</b>        | 20 Pcs                |
| <b>Packaging EAN code</b>        | 8015747178297         |
| <b>Sub-packaging weight</b>      | 1,78 kg               |
| <b>Sub-packaging description</b> | Plastic packaging     |
| <b>Sub-packaging quantity</b>    | 5 Pcs                 |
| <b>Sub-packaging EAN barcode</b> | 8015747178303         |

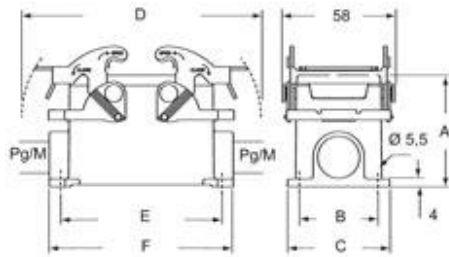
Part number

# M7P 16.25



## Catalogue drawings

C7P - C7AP M7P - M7AP



|              | A  | B  | C  | D     | E   | F    |
|--------------|----|----|----|-------|-----|------|
| C7P/M7P 10   | 57 | 40 | 52 | 122   | 82  | 93,5 |
| C7P/M7P 16   | 63 | 45 | 57 | 142,5 | 105 | 117  |
| C7P/M7P 24   | 63 | 45 | 57 | 169   | 132 | 144  |
| C7AP/M7AP 10 | 73 | 45 | 57 | 122   | 82  | 93,5 |
| C7AP/M7AP 16 | 77 | 45 | 57 | 142,5 | 105 | 117  |
| C7AP/M7AP 24 | 80 | 45 | 57 | 169   | 132 | 144  |

Notes