


Part number

KI 6343 RI5



Interlocked switched socket-outlet, KI series, 2 poles + PE, 4 h (yellow), 63 A, 100 ÷ 130 V, with compartment for modular units, 7 DIN-rail modules EN 60715

Product description

Product type	Interlocked switched socket-outlet
Series	KI..RI5
N. of poles	2 poles + 
Clock position	4
Size	143x343 fixing plates FC xx53 TB
Cable entry	Pg29
Specification	With compartment for modular units, 7 DIN-rail modules EN 60715

Technical data

Current	63 A
Voltage	100 ÷ 130 V
IP degree of protection	IP55

Further technical details

Weight	2.560,00 g
Operating temperature range (min, max)	-25°C ... +40°C
IK rating (impact degree of protection)	IK10

Material properties

Colour	RAL 7035 grey, RAL 1021 yellow
---------------	--------------------------------

Approvals / Standards

Reference standard	EN 60309-1, -2 e -4
---------------------------	---------------------

General ordering information

EAN13 code	8015747049498
-------------------	---------------

Packaging Information

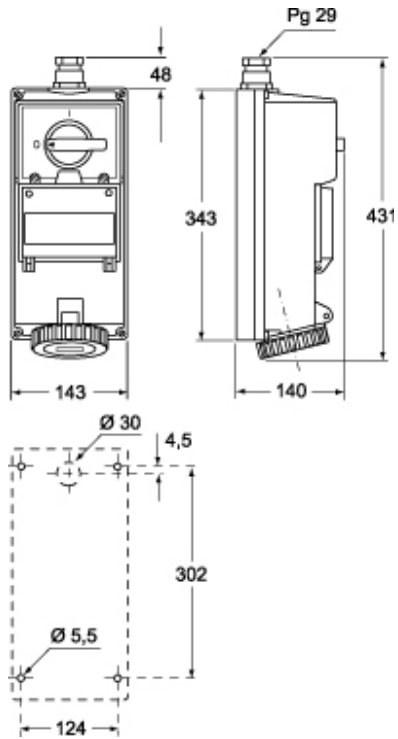
Packaging weight	2,56 kg
Packaging description	Carton box
Packaging quantity	1 Pcs
Packaging EAN code	8015747110884

Part number

KI 6343 RI5



Catalogue drawings



Notes