

Part number

# KI 3264 EB6



Interlocked switched socket-outlet, EB6 series, 3 poles + PE, 6 h (red), 32 A, 380 ÷ 415 V, without fuse-carrier

Product description		Material properties	
<b>Product type</b>	Interlocked switched socket-outlet	<b>Colour</b>	RAL 7035 grey, RAL 3000 red
<b>Series</b>	KI...EB6		Compliant with exemption 6(c): copper alloy containing up to 4% lead by weight
<b>N. of poles</b>	3 poles +	<b>RoHs conformity</b>	
<b>Clock position</b>	6	<b>China RoHs - EFUP</b>	50
<b>Size</b>	143x343 fixing plates FC xx53 TB	<b>REACH SVHC substances</b>	Yes Lead
<b>Cable entry</b>	M25	<b>SCIP number</b>	Ce861c8d-b979-403b-96d9-80aef6dc281d
<b>Specification</b>	Without fuse-carrier	<b>Approvals / Standards</b>	
<b>Technical data</b>		<b>Reference standard</b>	EN 60309-1, -2 e -4
<b>Current</b>	32 A	<b>General ordering information</b>	
<b>Voltage</b>	380 ÷ 415 V	<b>EAN13 code</b>	8015747192613
<b>IP degree of protection</b>	IP66	<b>Packaging Information</b>	
<b>Further technical details</b>		<b>Packaging length</b>	560,00 mm
<b>Weight</b>	1.000,00 g	<b>Packaging height</b>	330,00 mm
<b>Operating temperature range (min, max)</b>	-25°C ... +40°C	<b>Packaging width</b>	270,00 mm
<b>IK rating (impact degree of protection)</b>	IK10	<b>Packaging weight</b>	9,93 kg
		<b>Packaging volume</b>	49,90 dm <sup>3</sup>
		<b>Packaging description</b>	Carton box
		<b>Packaging quantity</b>	8 Pcs
		<b>Packaging EAN code</b>	8015747196598
		<b>Sub-packaging length</b>	270,00 mm
		<b>Sub-packaging height</b>	125,00 mm
		<b>Sub-packaging width</b>	120,00 mm
		<b>Sub-packaging weight</b>	1,24 kg
		<b>Sub-packaging volume</b>	4,05 dm <sup>3</sup>
		<b>Sub-packaging description</b>	Carton box
		<b>Sub-packaging quantity</b>	1 Pcs
		<b>Sub-packaging EAN barcode</b>	8015747192729



Catalogue drawings

**KI .. EB6 interlocked socket-outlets without fuse carrier**



- Compliant with EN 60309-1, 2 e 4
- Enclosures and inserts in insulating self-extinguishing thermoplastic material, RAL 7035 grey
- 16A and 32A types with spring lid
- Factory installed internal wiring
- Cable entry with threaded metric opening
- 'ZG' series switch, with 32A rating
- Mechanical interlock that prevents:
  - the switch from being turned on without the plug inserted and the plug from being removed while the switch is on
- Lockable switch
- Inspection panel, openable only when the switch is off.

**16A  
IP66 degree of protection**



**32A  
IP66 degree of protection**



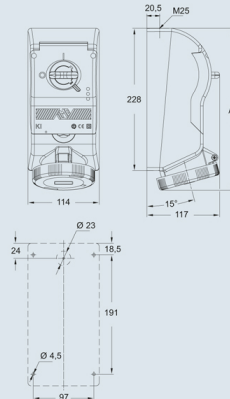
Poles	Frequency Hz	Voltage V	Earthing contact position h	Part No.	Colour	Part No.	Colour	
<b>2P+Ⓢ</b>	50 and 60	100 + 130	4	KI 1643 EB6	Yellow	KI 3243 EB6	Yellow	
	50 and 60	200 + 250	6	KI 1663 EB6	Blue	KI 3263 EB6	Blue	
	50 and 60	380 + 415	9	KI 1693 EB6	Red	KI 3293 EB6	Red	
	50 and 60	480 + 500	7	KI 1673 EB6	Black	KI 3273 EB6	Black	
	50 and 60	ins. transformer	12	KI 16123 EB6	a.v.	KI 32123 EB6	a.v.	
	> 300 + 500	> 50	2	KI 1623 EB6	*	KI 3223 EB6	*	
	c.c.	> 50 + 250	3	KI 1633 EB6	a.v.	KI 3233 EB6	a.v.	
<b>3P+Ⓢ</b>	50 and 60	100 + 130	4	KI 1644 EB6	Yellow	KI 3244 EB6	Yellow	
	50 and 60	200 + 250	9	KI 1694 EB6	Blue	KI 3294 EB6	Blue	
	50 and 60	380 + 415	6	KI 1664 EB6	Red	KI 3264 EB6	Red	
	60	440 + 460	11	KI 16114 EB6	Black	KI 32114 EB6	Black	
	50 and 60	480 + 500	7	KI 1674 EB6	Black	KI 3274 EB6	Black	
	50	380	3	KI 1634 EB6	Red	KI 3234 EB6	Red	
	60	440	3	KI 1634 EB6	Red	KI 3234 EB6	Red	
	100 + 300	> 50	10	KI 16104 EB6	*	KI 32104 EB6	*	
	> 300 + 500	> 50	2	KI 1624 EB6	*	KI 3224 EB6	*	
	<b>3P+N+Ⓢ</b>	50 and 60	57/100 + 75/130	4	KI 1645 EB6	Yellow	KI 3245 EB6	Yellow
		50 and 60	120/208 + 144/250	9	KI 1695 EB6	Blue	KI 3295 EB6	Blue
50 and 60		200/346 + 240/415	6	KI 1665 EB6	Red	KI 3265 EB6	Red	
50 and 60		277/480 + 288/500	7	KI 1675 EB6	Black	KI 3275 EB6	Black	
60		250/440 + 255/460	11	KI 16115 EB6	Black	KI 32115 EB6	Black	
50		220/380	3	KI 1635 EB6	Red	KI 3235 EB6	Red	
60		250/440	3	KI 1635 EB6	Red	KI 3235 EB6	Red	
> 300 + 500		> 50	2	KI 1625 EB6	*	KI 3225 EB6	*	

**Legend**

A.V. = Colour according to voltage

\*) Green may be used together with the colour of the operating range for frequencies above 60 Hz and up to a maximum of 500 Hz

Dimensions in mm



	poles	A
16A	2P+Ⓢ	252
	3P+Ⓢ	252
	3P+N+Ⓢ	252
	2P+Ⓢ	260
32A	3P+Ⓢ	260
	3P+N+Ⓢ	260

Dimensions indicated are not binding and may be changed without prior notice.

## Notes