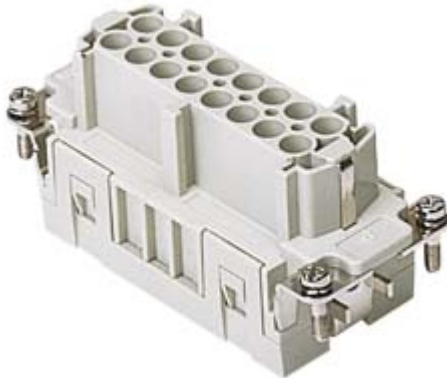


Part number
JSEF 16



Female insert, JSE series, spring terminal connection, 16 poles + PE, 16 A 500 V 6 kV 3, size "77.27"

Product description		Material properties	
Product type	Insert	Main material	Polycarbonate (PC)
Series	JSE	Other materials	Contacts: copper alloy
Connection type	Spring terminal connection	Colour	RAL 7035 grey
Gender	Female	RoHs conformity	Compliant with exemption 6(c): copper alloy containing up to 4% lead by weight
N. of poles	16 poles +	China RoHs - EFUP	50
Size	Size 77.27	REACH SVHC substances	Yes Lead
Technical data		SCIP number	1a9c93ff-0445-4a16-81e3-1609ac5274d6
Current	16 A	Approvals / Standards	
Voltage	500 V	Reference standard	EN 61984:2009-06
Rated impulse withstand voltage	6 kV	Certifications	CSA, CQC, DNV, BV, EAC
Pollution degree	3	UL	ECBT2
Rated voltage according to UL/CSA	600V	General ordering information	
Wire cross-section	0,14 mm ² - 2,50 mm ²	EAN13 code	8015747204750
AWG size	26 - 14	Packaging Information	
Contact type	Turned tin plated	Packaging length	450,00 mm
IP degree of protection	IP20 without enclosure, IP65/IP66/IP68/IP69 with enclosure	Packaging height	175,00 mm
Further technical details		Packaging width	230,00 mm
Characteristics according to EN 61984	16A 500V 6kV 3; 16A 400/690V 6kV 2	Packaging weight	7,76 kg
Mating cycles	≥ 200	Packaging volume	18,11 dm ³
Insulation resistance	≥ 10 GΩ	Packaging description	Carton box
Weight	97,00 g	Packaging quantity	80 Pcs
Operating temperature range (min, max)	-40 °C ... +125 °C	Packaging EAN code	8015747204897
UL 94 flammability rating	V-0	Sub-packaging length	87,00 mm
		Sub-packaging height	36,00 mm
		Sub-packaging width	180,00 mm
		Sub-packaging weight	0,49 kg
		Sub-packaging volume	0,56 dm ³
		Sub-packaging description	Carton tray
		Sub-packaging quantity	5 Pcs
		Sub-packaging EAN barcode	8015747204903

Part number

JSEF 16



Notes

California Proposition 65 Information



WARNING

This product can expose you to lead and its compounds, known to the State of California to cause cancer and/or reproductive toxicity. For more information go to www.P65Warnings.ca.gov.

California Proposition 65 Information



WARNING

This product can expose you to lead and its compounds, known to the State of California to cause cancer and/or reproductive toxicity. For more information go to www.P65Warnings.ca.gov.