

Part number

JMPAP 24.40



Surface mounting housing, JEl®-P series, with 2 levers, M40 cable entry, size 104.27, high construction

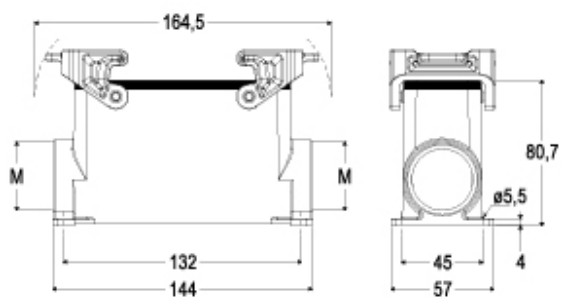
Product description		Material properties	
Product type	Surface mounting housing	Other materials	Lever: Polyamide (PA) Gasket: NBR
Series	JEl®-P	Colour	RAL 7040 grey
Closing type	With 2 levers	General ordering information	
Size	Size 104.27	EAN13 code	8015747034074
Cable entry	With cable entry M40	Packaging Information	
Specification	High construction	Packaging length	475,00 mm
Technical data		Packaging height	220,00 mm
IP degree of protection	IP65	Packaging width	200,00 mm
Further technical details		Packaging volume	20,90 dm ³
Weight	1,00 g	Packaging description	Carton box
Operating temperature range (min, max)	-40°C...+125°C	Packaging quantity	10 Pcs
		Packaging EAN code	8015747035484
		Sub-packaging description	Plastic packaging
		Sub-packaging quantity	5 Pcs
		Sub-packaging EAN barcode	8015747035491

Part number

JMPAP 24.40



Catalogue drawings



Notes