

Part number

JMPAP 24.240



Surface mounting housing, JEl®-P series, with 2 levers, M32 x 2 cable entry, size 104.27, high construction

Product description

Product type	Surface mounting housing
Series	JEl®-P
Closing type	With 2 levers
Size	Size 104.27
Cable entry	With cable entry M40 x 2
Specification	High construction

Technical data

IP degree of protection IP65

Further technical details

Weight	1,00 g
Operating temperature range (min, max)	-40°C...+125°C

Material properties

Other materials	Lever: Polyamide (PA) Gasket: NBR
Colour	RAL 7040 grey

General ordering information

EAN13 code 8015747034050

Packaging Information

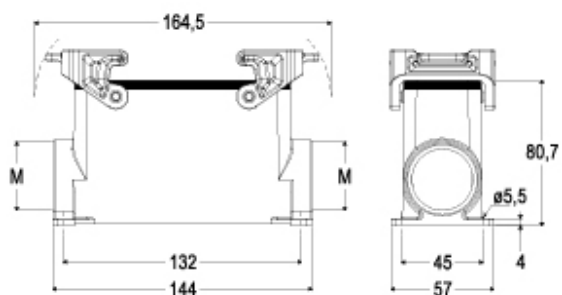
Packaging length	475,00 mm
Packaging height	220,00 mm
Packaging width	200,00 mm
Packaging volume	20,90 dm ³
Packaging description	Carton box
Packaging quantity	10 Pcs
Packaging EAN code	8015747035569
Sub-packaging description	Plastic packaging
Sub-packaging quantity	5 Pcs
Sub-packaging EAN barcode	8015747035576

Part number

JMPAP 24.240



Catalogue drawings



Notes