

Part number

# JMPAP 24.225



Surface mounting housing, JEl®-P series, with 2 levers, M25 x 2 cable entry, size 104.27, high construction

#### Product description

<b>Product type</b>	Surface mounting housing
<b>Series</b>	JEl®-P
<b>Closing type</b>	With 2 levers
<b>Size</b>	Size 104.27
<b>Cable entry</b>	With cable entry M25 x 2
<b>Specification</b>	High construction

#### Technical data

**IP degree of protection** IP65

#### Further technical details

<b>Weight</b>	1,00 g
<b>Operating temperature range (min, max)</b>	-40°C...+125°C

#### Material properties

<b>Other materials</b>	Lever: Polyamide (PA) Gasket: NBR
<b>Colour</b>	RAL 7040 grey

#### General ordering information

**EAN13 code** 8015747034012

#### Packaging Information

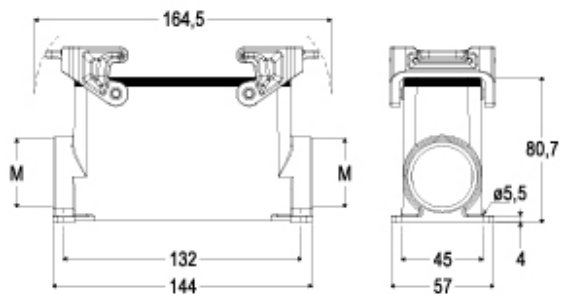
<b>Packaging length</b>	475,00 mm
<b>Packaging height</b>	220,00 mm
<b>Packaging width</b>	200,00 mm
<b>Packaging volume</b>	20,90 dm <sup>3</sup>
<b>Packaging description</b>	Carton box
<b>Packaging quantity</b>	10 Pcs
<b>Packaging EAN code</b>	8015747035521
<b>Sub-packaging description</b>	Plastic packaging
<b>Sub-packaging quantity</b>	5 Pcs
<b>Sub-packaging EAN barcode</b>	8015747035538

Part number

# JMPAP 24.225



## Catalogue drawings



---

Notes