

Part number

JMPAP 10 L25



Surface mounting housing, JEI®-P series, with 1 lever, M25 cable entry, size 44.27, high construction

Product description

Product type	Surface mounting housing
Series	JEI®-P
Closing type	With 1 lever
Size	Size 57.27
Cable entry	With cable entry M25
Specification	High construction

Technical data

IP degree of protection	IP65
--------------------------------	------

Further technical details

Operating temperature range (min, max)	-40°C...+125°C
---	----------------

Material properties

Other materials	Lever: Polyamide (PA) Gasket: NBR
Colour	RAL 7040 grey

General ordering information

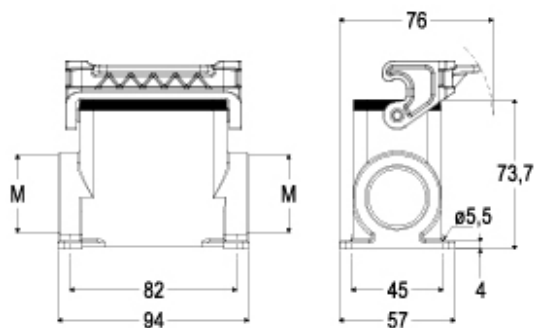
EAN13 code	8015747033749
-------------------	---------------

Part number

JMPAP 10 L25



Catalogue drawings



Notes