

Part number

# FM 32 MT



Box system carrying handle, FM series



Product description	
<b>Product type</b>	Box system carrying handle
<b>Series</b>	FM
Further technical details	
<b>Weight</b>	45,00 g
<b>Operating temperature range (min, max)</b>	-40°C ... +125°C

Material properties	
<b>Colour</b>	RAL 7035 grey
General ordering information	
<b>EAN13 code</b>	8015747047463
Packaging Information	
<b>Sub-packaging weight</b>	0,05 kg
<b>Sub-packaging description</b>	Plastic packaging
<b>Sub-packaging quantity</b>	1 Pcs
<b>Sub-packaging EAN barcode</b>	8015747047470

# Part number FM 32 MT



## Catalogue drawings

### FM complementary parts and accessories



**Box system carrying handle**  
Climbing irons for box fixing



**DIN-rail EN 60715 - Insulated terminal block**  
Collar - Screws kit - Adhesive label



Description

Part No.

Part No.

**Box system carrying handle**  
- For 3236, 2451, 3251, 3221 and 4272 boards

FM 32 MT

**Climbing irons for external wall mounting**  
- For 3236, 2451, 3251, 3221 and 4272 boards

BC SFT

**Sized DIN-rail EN 60715 (35 mm)**  
With back plates for the positioning at different depths and fixing screws  
- For 2451 boards  
- For 3236, 3251, 3221 boards  
- For 4272 boards

FM GD 18  
FM GD 25  
FM GD 35

**Insulated terminal block, 3 P 25 mm<sup>2</sup> + 10 P 10 mm<sup>2</sup>**  
- For neutral and/or ground, compliant with EN 60998-2-1, stackable (up to 2 units)

FM 2510 MI

**collar**  
- for format 1043 box system

FM 1043 CO

**screws kit**  
- for mounting sockets PQ-PI-PQF-PIF series

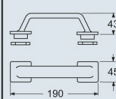
FM 416

**adhesive label**  
- for the identification of the mounted modular devices

FM 18 ET

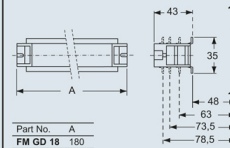
Dimensions in mm

FM 32 MT

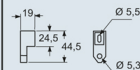


Dimensions in mm

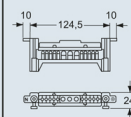
FM GDxx



BC SFT



FM 2510 MI



Dimensions indicated are not binding and may be changed without prior notice.

## Notes