

Part number

CZV 25 LG



Hood, IL-BRID series, with 1 lever, Pg16 top cable entry, size "66.16"

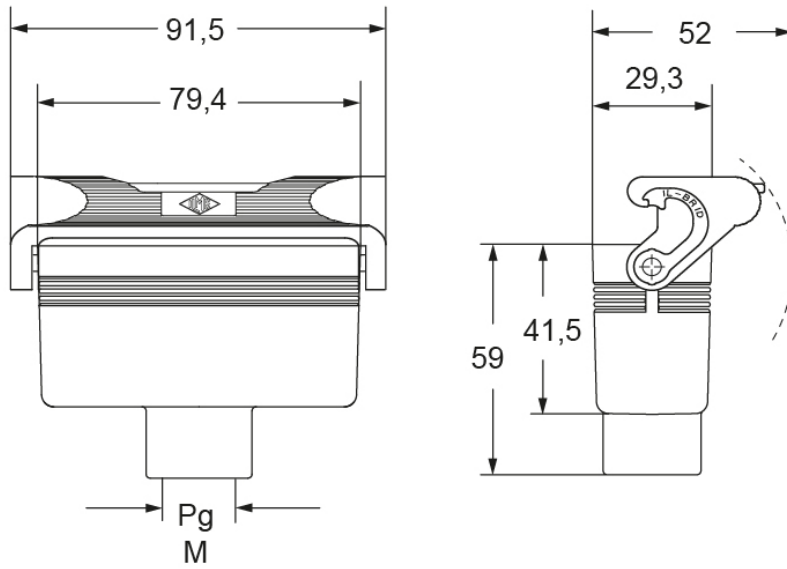
Product description		Material properties	
Product type	Hood	Other materials	Lever: Polyamide (PA) and Stainless steel core
Series	IL-BRID	Colour	RAL 7040 grey
Closing type	With 1 lever	RoHs conformity	Compliant
Size	Size 66.16	China RoHs - EFUP	E
Cable entry	Top cable entry Pg16	REACH SVHC substances	No
Technical data		Approvals / Standards	
IP degree of protection	IP66 / IP67 / IP69	UL	ECBT2
Further technical details		cUL	ECBT8
Further technical details		General ordering information	
Weight	115,00 g	EAN13 code	8015747044943
Operating temperature range (min, max)	-40°C...+125°C	Packaging Information	
		Packaging length	180,00 mm
		Packaging height	105,00 mm
		Packaging width	270,00 mm
		Packaging weight	1,26 kg
		Packaging volume	5,10 dm ³
		Packaging description	Carton box
		Packaging quantity	10 Pcs
		Packaging EAN code	8015747044950
		Sub-packaging weight	0,63 kg
		Sub-packaging description	Plastic packaging
		Sub-packaging quantity	5 Pcs
		Sub-packaging EAN barcode	8015747217675

Part number

CZV 25 LG



Catalogue drawings



Notes