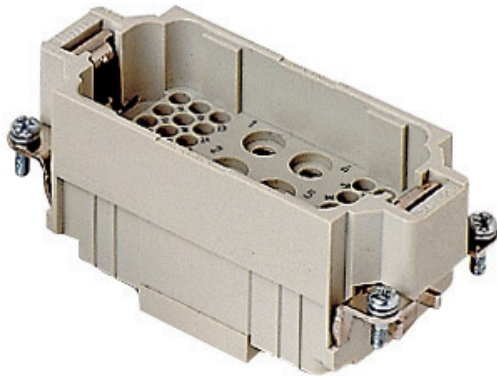


Part number

# CXM 6/36



Male insert, CX series, crimp connection, 6 + 36 poles + PE, 40 A 690 V 8 kV 3 / 10 A 160 V 2,5 kV 3, size "77.27"

#### Product description

|                        |                    |
|------------------------|--------------------|
| <b>Product type</b>    | Insert             |
| <b>Series</b>          | CX                 |
| <b>Connection type</b> | Crimp connection   |
| <b>Gender</b>          | Male               |
| <b>N. of poles</b>     | 6 poles + $\oplus$ |
| <b>Auxiliary poles</b> | 36D                |
| <b>Size</b>            | Size 77.27         |

#### Technical data

|  |  |
|--|--|
| <b>Current</b>                           | 40 A   |
| <b>Voltage</b>                           | 690 V  |
| <b>Rated impulse withstand voltage</b>   | 8 kV   |
| <b>Pollution degree</b>                  | 3  |
| <b>Rated voltage according to UL/CSA</b> | 600 V  |
| <b>IP degree of protection</b>           | IP20 without enclosure, IP65/IP66/IP68/IP69 with enclosure |

#### Further technical details

|   |   |
|---|---|
| <b>Characteristics according to EN 61984</b>  | 40A 690V 8kV 3 (aux:10A 160V 2.5kV 3; 10A 250V 4kV 2) |
| <b>Mating cycles</b>                          | ≥ 500   |
| <b>Insulation resistance</b>                  | ≥ 10 GΩ   |
| <b>Weight</b>                                 | 63,00 g   |
| <b>Operating temperature range (min, max)</b> | -40 °C ... +125 °C                                    |
| <b>UL 94 flammability rating</b>              | V-0   |

#### Material properties

|                              |                    |
|------------------------------|--------------------|
| <b>Main material</b>         | Polycarbonate (PC) |
| <b>Colour</b>                | RAL 7032 grey      |
| <b>RoHs conformity</b>       | Compliant          |
| <b>China RoHs - EFUP</b>     | E                  |
| <b>REACH SVHC substances</b> | No                 |

#### Approvals / Standards

|                           |                         |
|---------------------------|-------------------------|
| <b>Reference standard</b> | EN 61984:2009-06        |
| <b>Certifications</b>     | CSAc, CQC, DNV, BV, EAC |
| <b>UL</b>                 | ECBT2                   |

#### General ordering information

|                   |               |
|-------------------|---------------|
| <b>EAN13 code</b> | 8015747042710 |
| <b>eCl@ss 8.1</b> | 27440205      |
| <b>ETIM 7.0</b>   | EC000438      |

#### Packaging Information

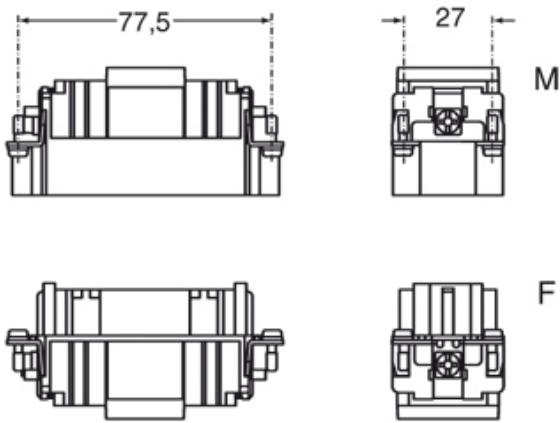
|                                  |                      |
|----------------------------------|----------------------|
| <b>Packaging length</b>          | 230,00 mm            |
| <b>Packaging height</b>          | 110,00 mm            |
| <b>Packaging width</b>           | 180,00 mm            |
| <b>Packaging weight</b>          | 2,27 kg              |
| <b>Packaging volume</b>          | 4,55 dm <sup>3</sup> |
| <b>Packaging description</b>     | Carton box           |
| <b>Packaging quantity</b>        | 30 Pcs               |
| <b>Packaging EAN code</b>        | 8015747098571        |
| <b>Sub-packaging length</b>      | 87,00 mm             |
| <b>Sub-packaging height</b>      | 36,00 mm             |
| <b>Sub-packaging width</b>       | 180,00 mm            |
| <b>Sub-packaging weight</b>      | 0,38 kg              |
| <b>Sub-packaging volume</b>      | 0,56 dm <sup>3</sup> |
| <b>Sub-packaging description</b> | Carton tray          |
| <b>Sub-packaging quantity</b>    | 5 Pcs                |
| <b>Sub-packaging EAN barcode</b> | 8015747042727        |

Part number

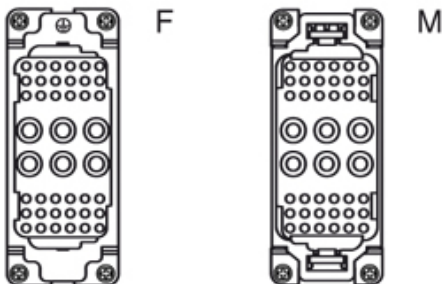
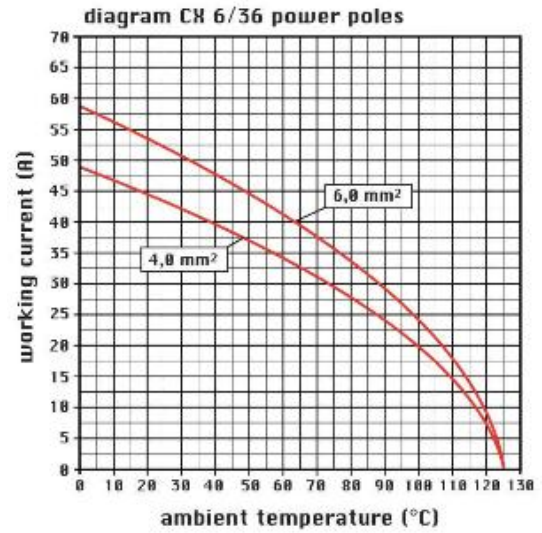
# CXM 6/36



Catalogue drawings



Catalogue drawings



## Notes

### California Proposition 65 Information



**WARNING**

This product can expose you to nickel compounds, known to the State of California to cause cancer and/or reproductive toxicity. For more information go to [www.P65Warnings.ca.gov](http://www.P65Warnings.ca.gov).