

Part number

# CXA 02 I



Bulkhead mounting housing, MIXO TWO series, with 1 lever, 2 modules, with PE connection terminal and contact

Product description	
<b>Product type</b>	Bulkhead mounting housing
<b>Series</b>	MIXO TWO
<b>Closing type</b>	With 1 lever
<b>Size</b>	2 modules
<b>Specification</b>	With PE connection terminal and contact
Technical data	
<b>IP degree of protection</b>	IP65
Further technical details	
<b>Mating cycles</b>	≥ 500
<b>Weight</b>	114,50 g
<b>Operating temperature range (min, max)</b>	-40°C...+125°C
<b>Tightening torque for PE connection</b>	1,2 Nm

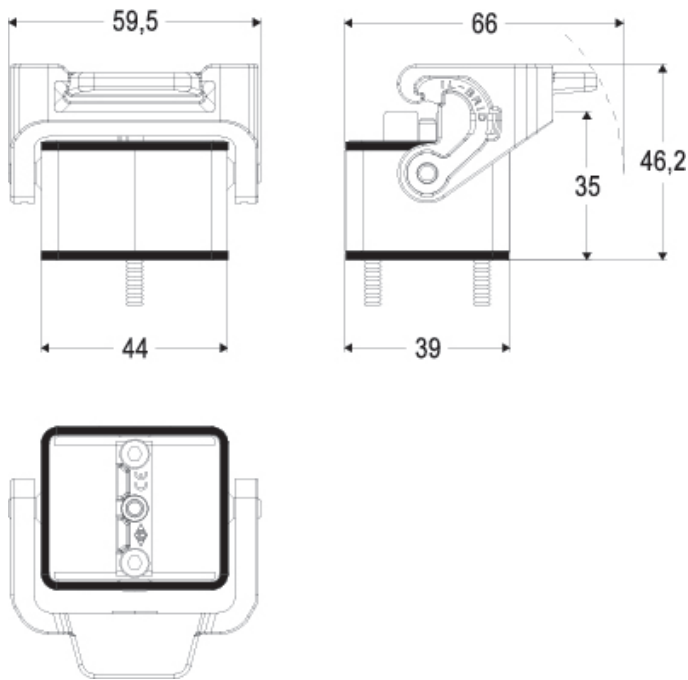
Material properties	
<b>Main material</b>	Zinc die-cast
<b>Other materials</b>	Lever: Polyamide (PA) and Stainless steel core Gasket NBR
<b>Colour</b>	RAL 7040 grey
<b>RoHs conformity</b>	Compliant
<b>China RoHs - EFUP</b>	E
<b>REACH SVHC substances</b>	No
General ordering information	
<b>EAN13 code</b>	8015747018630
<b>eCl@ss 8.1</b>	27440202
<b>ETIM 7.0</b>	EC000437
Packaging Information	
<b>Packaging length</b>	180,00 mm
<b>Packaging height</b>	120,00 mm
<b>Packaging width</b>	155,00 mm
<b>Packaging weight</b>	1,24 kg
<b>Packaging volume</b>	3,35 dm <sup>3</sup>
<b>Packaging description</b>	Carton box
<b>Packaging quantity</b>	10 Pcs
<b>Packaging EAN code</b>	8015747019538
<b>Sub-packaging weight</b>	0,12 kg
<b>Sub-packaging description</b>	Plastic bag
<b>Sub-packaging quantity</b>	1 Pcs
<b>Sub-packaging EAN barcode</b>	8015747019569

Part number

# CXA 02 I

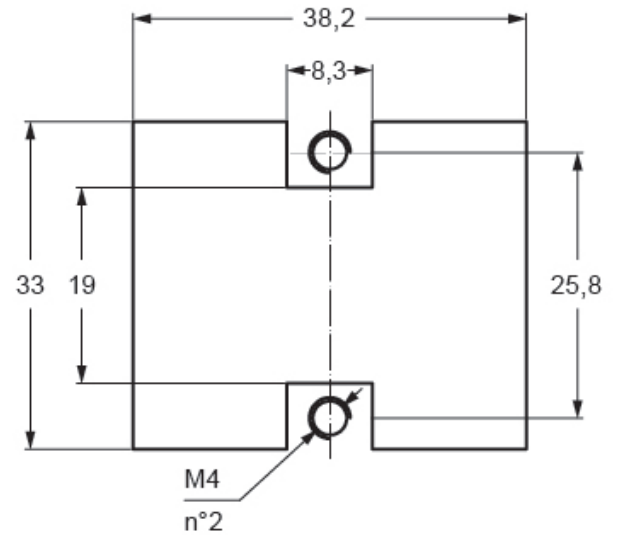


Catalogue drawings



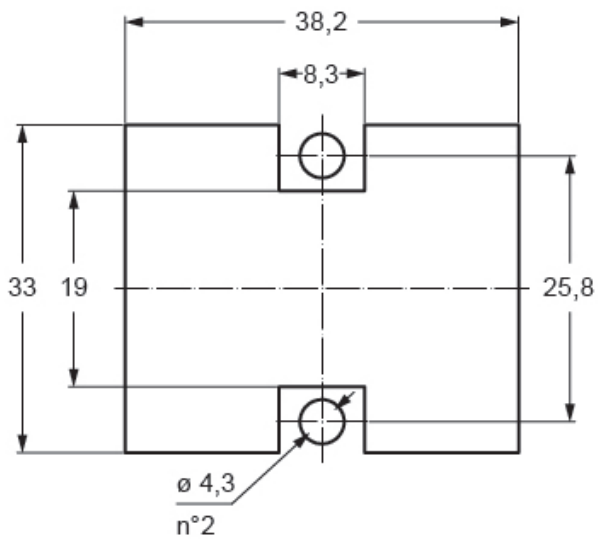
Catalogue drawings

panel cut-out for MIXO TWO - threaded panel



Catalogue drawings

panel cut-out for MIXO TWO - through-holes panel  
(max. panel thickness: 6 mm)



Notes