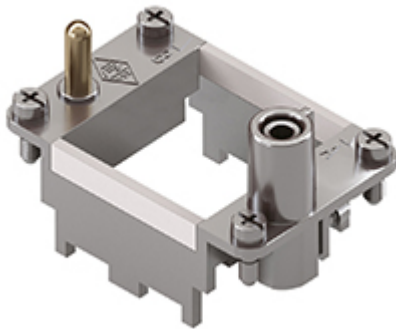


Part number

CX 02 TM



Frame for Mixo inserts, 2 modules, for 2 modular inserts and enclosures size "44.27", frame for hoods

Product description

| | |
|----------------------|--|
| Product type | Frame for Mixo inserts |
| Size | 2 modules |
| Specification | For 2 modular inserts and enclosures size 44.27 Frame for hoods |

Further technical details

| | |
|----------------------------------|---------|
| Weight | 45,00 g |
| UL 94 flammability rating | V-0 |

Material properties

| | |
|------------------------------|--|
| RoHs conformity | Compliant with exemption 6(c): copper alloy containing up to 4% lead by weight |
| China RoHs - EFUP | 50 |
| REACH SVHC substances | Yes Lead |
| SCIP number | C0556c52-3b1b-4ffb-87d5-58c9db853c44 |

Approvals / Standards

| | |
|------------|-------|
| UL | ECBT2 |
| cUL | ECBT8 |

General ordering information

| | |
|-------------------|---------------|
| EAN13 code | 8015747041676 |
| eCl@ss 8.1 | 27440210 |
| ETIM 7.0 | EC002310 |

Packaging Information

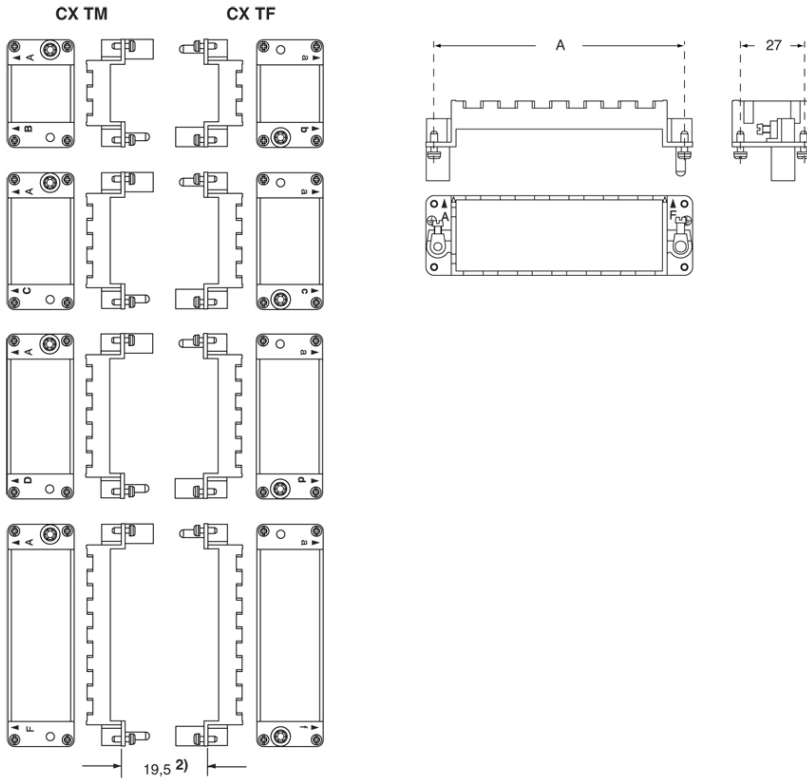
| | |
|----------------------------------|----------------------|
| Packaging length | 270,00 mm |
| Packaging height | 75,00 mm |
| Packaging width | 180,00 mm |
| Packaging weight | 2,80 kg |
| Packaging volume | 3,65 dm ³ |
| Packaging description | Carton box |
| Packaging quantity | 60 Pcs |
| Packaging EAN code | 8015747264198 |
| Sub-packaging length | 104,00 mm |
| Sub-packaging height | 36,00 mm |
| Sub-packaging width | 180,00 mm |
| Sub-packaging weight | 0,47 kg |
| Sub-packaging volume | 0,67 dm ³ |
| Sub-packaging description | Carton tray |
| Sub-packaging quantity | 10 Pcs |
| Sub-packaging EAN barcode | 8015747264204 |

Part number

CX 02 TM



Catalogue drawings



Notes

California Proposition 65 Information



WARNING

This product can expose you to lead and its compounds, known to the State of California to cause cancer and/or reproductive toxicity. For more information go to www.P65Warnings.ca.gov.