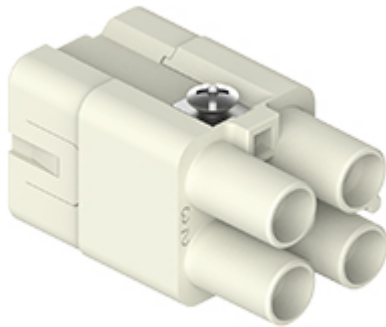



Part number

# CQ4F 03/2



Female insert, CQ series, crimp connection, 3 + 2 poles + PE, 40 A 400 V 6 kV 3 / 10 A 250 V 4 kV 3, size "21.21"

#### Product description

|                        |                                                                                             |
|------------------------|---------------------------------------------------------------------------------------------|
| <b>Product type</b>    | Insert                                                                                      |
| <b>Series</b>          | CQ                                                                                          |
| <b>Connection type</b> | Crimp connection                                                                            |
| <b>Gender</b>          | Female                                                                                      |
| <b>N. of poles</b>     | 3 poles +  |
| <b>Auxiliary poles</b> | 2 poles                                                                                     |
| <b>Size</b>            | Size "21.21"                                                                                |

#### Technical data

|                                          |                                                            |
|------------------------------------------|------------------------------------------------------------|
| <b>Current</b>                           | 40 A                                                       |
| <b>Voltage</b>                           | 400 V                                                      |
| <b>Rated impulse withstand voltage</b>   | 6 kV                                                       |
| <b>Pollution degree</b>                  | 3                                                          |
| <b>Rated voltage according to UL/CSA</b> | 600 V                                                      |
| <b>IP degree of protection</b>           | IP20 without enclosure, IP65/IP66/IP68/IP69 with enclosure |

#### Further technical details

|                                               |                                       |
|-----------------------------------------------|---------------------------------------|
| <b>Characteristics according to EN 61984</b>  | 40 A 400 V 6 kV 3 / 10 A 250 V 4 kV 3 |
| <b>Mating cycles</b>                          | ≥ 500                                 |
| <b>Insulation resistance</b>                  | ≥ 10 GΩ                               |
| <b>Contact resistance</b>                     | ≤ 0,3 mΩ (3 poles) / ≤ 3 mΩ (2 poles) |
| <b>Weight</b>                                 | 15,00 g                               |
| <b>Operating temperature range (min, max)</b> | -40 °C ... +125 °C                    |
| <b>UL 94 flammability rating</b>              | V-0                                   |

#### Material properties

|                        |                    |
|------------------------|--------------------|
| <b>Main material</b>   | Polycarbonate (PC) |
| <b>Colour</b>          | RAL 7032 grey      |
| <b>RoHs conformity</b> | Compliant          |

#### Approvals / Standards

|                       |              |
|-----------------------|--------------|
| <b>Certifications</b> | DNV, BV, EAC |
| <b>UL</b>             | ECBT2, PVVA2 |
| <b>cUL</b>            | ECBT8, PVVA8 |

#### General ordering information

|                   |               |
|-------------------|---------------|
| <b>EAN13 code</b> | 8015747269506 |
| <b>eCl@ss 8.1</b> | 27440205      |
| <b>ETIM 7.0</b>   | EC000438      |

#### Packaging Information

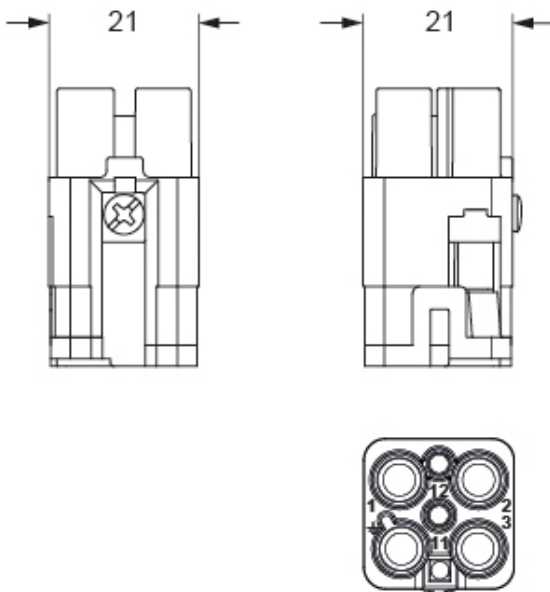
|                                  |                      |
|----------------------------------|----------------------|
| <b>Packaging length</b>          | 200,00 mm            |
| <b>Packaging height</b>          | 245,00 mm            |
| <b>Packaging width</b>           | 146,00 mm            |
| <b>Packaging weight</b>          | 3,20 kg              |
| <b>Packaging volume</b>          | 7,15 dm <sup>3</sup> |
| <b>Packaging description</b>     | Carton box           |
| <b>Packaging quantity</b>        | 200 Pcs              |
| <b>Packaging EAN code</b>        | 8015747269537        |
| <b>Sub-packaging length</b>      | 116,00 mm            |
| <b>Sub-packaging height</b>      | 43,00 mm             |
| <b>Sub-packaging width</b>       | 180,00 mm            |
| <b>Sub-packaging weight</b>      | 0,64 kg              |
| <b>Sub-packaging volume</b>      | 0,90 dm <sup>3</sup> |
| <b>Sub-packaging description</b> | Carton tray          |
| <b>Sub-packaging quantity</b>    | 40 Pcs               |
| <b>Sub-packaging EAN barcode</b> | 8015747269544        |

Part number

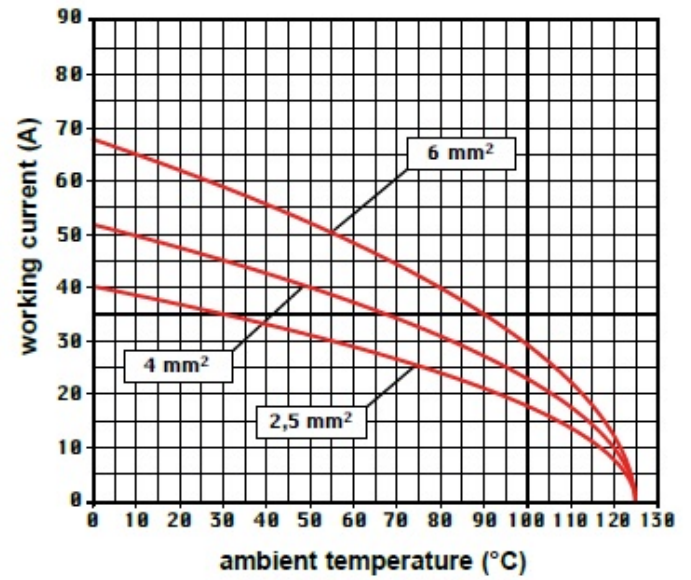
# CQ4F 03/2



Catalogue drawings



Derating curves



Notes