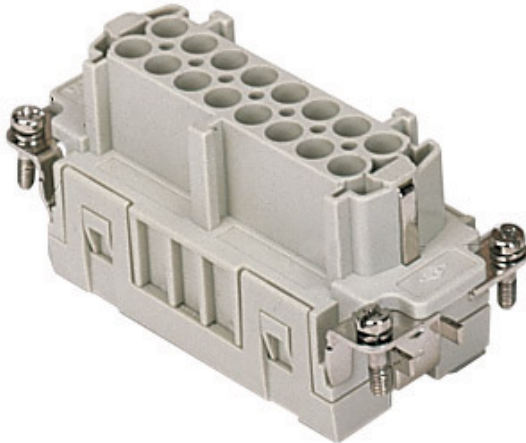


Part number

CMCEF 06 N



Female insert, CMCE series, crimp connection, 6 + 2 poles + PE (17-32), 16 A 830 V 8 kV 3 / 16 A 500 V 6 kV 3, size "77.62"

Product description

| | |
|------------------------|------------------|
| Product type | Insert |
| Series | CMCE |
| Connection type | Crimp connection |
| Gender | Female |
| N. of poles | 12 poles + |
| Auxiliary poles | 2 poles |
| Size | Size 77.62 |

Technical data

| | |
|--|--|
| Current | 16 A |
| Voltage | 830 V |
| Rated impulse withstand voltage | 8 kV |
| Pollution degree | 3 |
| Rated voltage according to UL/CSA | 600 V |
| Pole numbering system | 17-32 |
| IP degree of protection | IP20 without enclosure, IP65/IP66 with enclosure |

Further technical details

| | |
|---|---|
| Characteristics according to EN 61984 | 16A 830V 8kV 3 (aux: 16A 500V 6kV 3); 16A 1000V 8kV 2 (power contacts only) |
| Mating cycles | ≥ 500 |
| Insulation resistance | ≥ 10 GΩ |
| Contact resistance | ≤ 1 mΩ |
| Weight | 53,00 g |
| Operating temperature range (min, max) | -40 °C ... +125 °C |
| UL 94 flammability rating | V-0 |

Material properties

| | |
|------------------------------|--------------------|
| Main material | Polycarbonate (PC) |
| Colour | RAL 7032 grey |
| RoHs conformity | Compliant |
| China RoHs - EFUP | E |
| REACH SVHC substances | No |

Approvals / Standards

| | |
|---------------------------|------------------------|
| Reference standard | EN 61984:2009-06 |
| Certifications | CSA, CQC, DNV, BV, EAC |
| UL | ECBT2 |

General ordering information

| | |
|-------------------|---------------|
| EAN13 code | 8015747133364 |
| ETIM 7.0 | EC000438 |

Packaging Information

| | |
|----------------------------------|----------------------|
| Packaging length | 230,00 mm |
| Packaging height | 110,00 mm |
| Packaging width | 180,00 mm |
| Packaging weight | 1,69 kg |
| Packaging volume | 4,55 dm ³ |
| Packaging description | Carton box |
| Packaging quantity | 30 Pcs |
| Packaging EAN code | 8015747135948 |
| Sub-packaging length | 87,00 mm |
| Sub-packaging height | 36,00 mm |
| Sub-packaging width | 180,00 mm |
| Sub-packaging weight | 0,28 kg |
| Sub-packaging volume | 0,56 dm ³ |
| Sub-packaging description | Carton tray |
| Sub-packaging quantity | 5 Pcs |
| Sub-packaging EAN barcode | 8015747135955 |

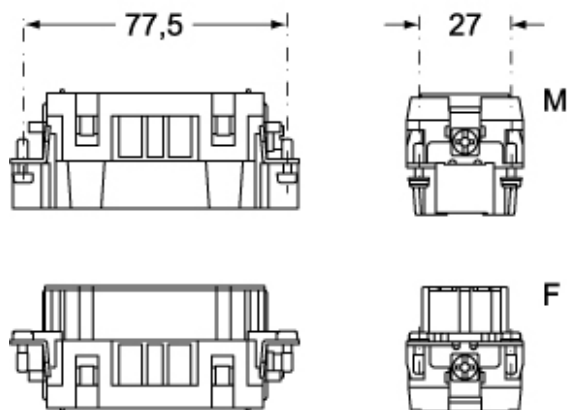
Part number

CMCEF 06 N

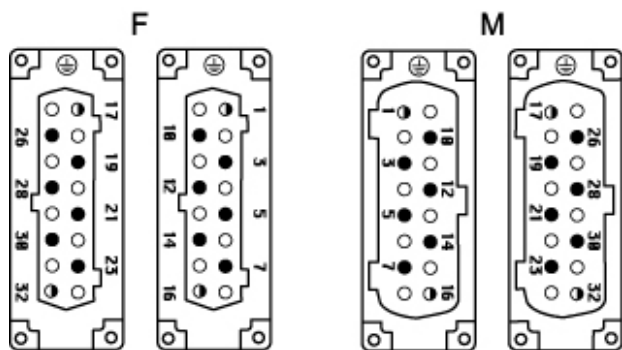


Catalogue drawings

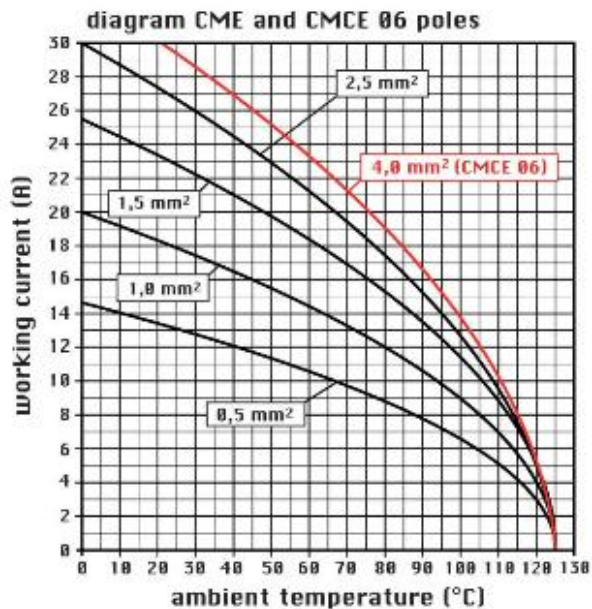
CMCEM 06 (N)



CMCEF 06 (N)



Catalogue drawings



Notes

California Proposition 65 Information



WARNING

This product can expose you to nickel compounds, known to the State of California to cause cancer and/or reproductive toxicity. For more information go to www.P65Warnings.ca.gov.