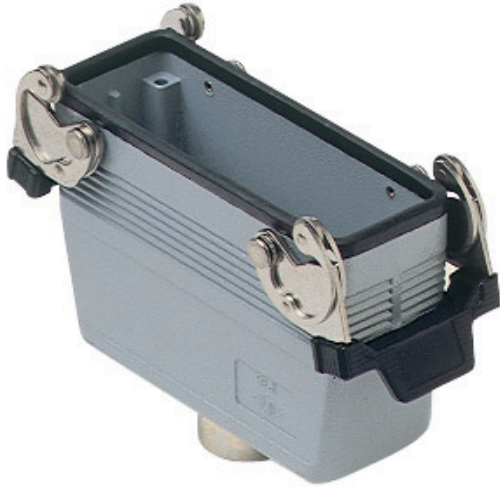


Part number

# CHV 24 G



Hood, C-TYPE series, with 2 levers, Pg21 top cable entry, size "104.27"

| Product description                           |                         | Material properties              |   |
|---|-------------------------|----------------------------------|---|
| <b>Product type</b>                           | Hood                    | <b>Other materials</b>           | Lever: Stainless steel, polyamide (PA)<br>Gasket: NBR |
| <b>Series</b>                                 | C-TYPE                  | <b>Colour</b>                    | RAL 7040 grey   |
| <b>Closing type</b>                           | With 2 levers           | <b>RoHs conformity</b>           | Compliant   |
| <b>Size</b>                                   | Size 104.27             | <b>China RoHs - EFUP</b>         | E   |
| <b>Cable entry</b>                            | Top cable entry<br>Pg21 | <b>REACH SVHC substances</b>     | No  |
| Technical data                                |                         | Approvals / Standards            |   |
| <b>IP degree of protection</b>                | IP65 / IP66 / IP69      | <b>Certifications</b>            | DNV, BV   |
| Further technical details                     |                         | <b>UL</b>                        | ECBT2   |
| <b>Weight</b>                                 | 298,00 g                | <b>cUL</b>                       | ECBT8   |
| <b>Operating temperature range (min, max)</b> | -40°C...+125°C          | General ordering information     |   |
|   |                         | <b>EAN13 code</b>                | 8015747024679   |
|   |                         | Packaging Information            |   |
|   |                         | <b>Packaging length</b>          | 300,00 mm   |
|   |                         | <b>Packaging height</b>          | 160,00 mm   |
|   |                         | <b>Packaging width</b>           | 180,00 mm   |
|   |                         | <b>Packaging weight</b>          | 3,25 kg   |
|   |                         | <b>Packaging volume</b>          | 8,64 dm <sup>3</sup>                                  |
|   |                         | <b>Packaging description</b>     | Carton box  |
|   |                         | <b>Packaging quantity</b>        | 10 Pcs  |
|   |                         | <b>Packaging EAN code</b>        | 8015747024686   |
|   |                         | <b>Sub-packaging weight</b>      | 1,63 kg   |
|   |                         | <b>Sub-packaging description</b> | Plastic packaging                                     |
|   |                         | <b>Sub-packaging quantity</b>    | 5 Pcs   |
|   |                         | <b>Sub-packaging EAN barcode</b> | 8015747024693   |

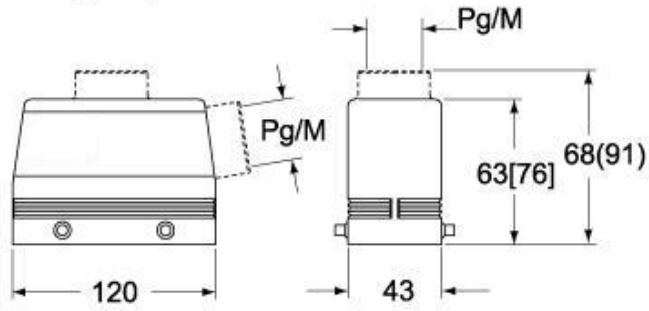
Part number

# CHV 24 G

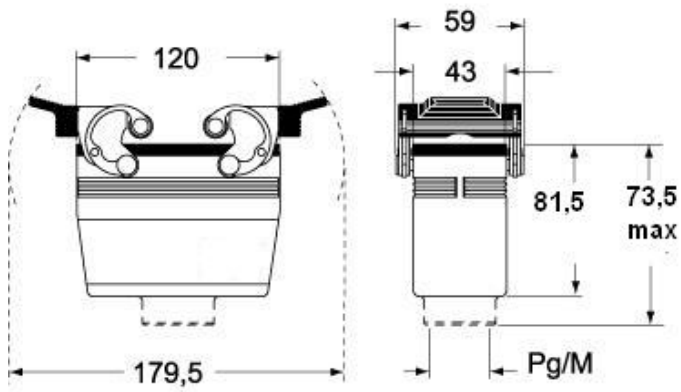


Catalogue drawings

**CHO [CAO] CHV (CAV) - MHO [MAO]  
MHV (MAV)**



**CHV G (CAV G) - MHV G (MAV G) - [MFV G]**



Notes