

Part number

CHPX 50.29



Surface mounting housing, C-TYPE series, with 2 levers, Pg29 cable entry, size "66.40"

Product description

| | |
|---------------------|--------------------------|
| Product type | Surface mounting housing |
| Series | C-TYPE |
| Closing type | With 2 levers |
| Size | Size "66.40" |
| Cable entry | With cable entry Pg29 |

Technical data

IP degree of protection IP66 / IP69

Further technical details

Operating temperature range (min, max) -40°C...+125°C

Material properties

| | |
|------------------------------|---------------------------------------|
| Other materials | Lever: Stainless steel Gasket: NBR |
| Colour | RAL 7040 grey |
| RoHs conformity | Compliant |
| China RoHs - EFUP | E |
| REACH SVHC substances | No |

Approvals / Standards

| | |
|-----------------------|---------|
| Certifications | DNV, BV |
| UL | ECBT2 |
| cUL | ECBT8 |

General ordering information

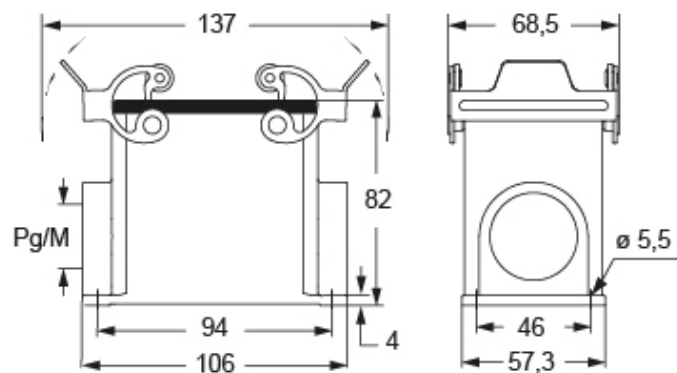
EAN13 code 8015747276320

Part number

CHPX 50.29



Catalogue drawings



Notes