

Part number

CHPX 32 LP



Surface mounting housing, C-TYPE series, with 1 lever, Pg36 cable entry, size "77.62", with plastic cover

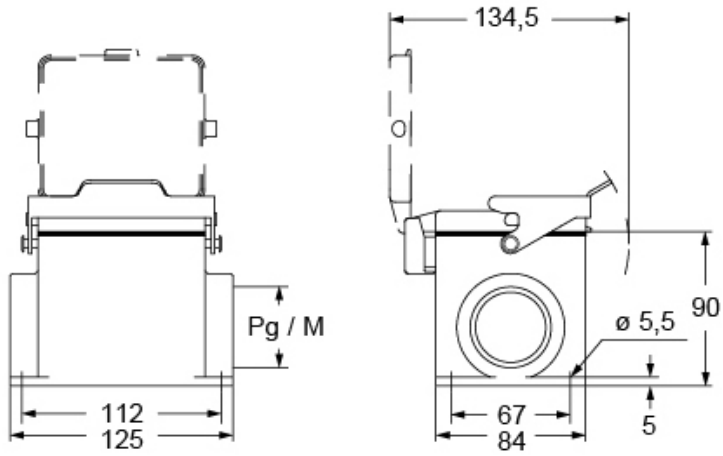
Product description		Material properties	
Product type	Surface mounting housing	Other materials	Lever: Stainless steel Gasket: NBR
Series	C-TYPE	Colour	RAL 7040 grey
Closing type	With 1 lever	RoHs conformity	Compliant
Size	Size 77.62	China RoHs - EFUP	E
Cable entry	With cable entry Pg36	REACH SVHC substances	No
Specification	With plastic cover	Approvals / Standards	
Technical data		Certifications	DNV, BV
IP degree of protection	IP65	UL	ECBT2
Further technical details		cUL	ECBT8
Weight	774,00 g	General ordering information	
Operating temperature range (min, max)	-40°C...+125°C	EAN13 code	8015747267731
		Packaging Information	
		Packaging length	250,00 mm
		Packaging height	145,00 mm
		Packaging width	300,00 mm
		Packaging weight	3,10 kg
		Packaging volume	10,88 dm ³
		Packaging description	Carton box
		Packaging quantity	4 Pcs
		Packaging EAN code	8015747268608
		Sub-packaging weight	0,78 kg
		Sub-packaging description	Plastic packaging
		Sub-packaging quantity	1 Pcs
		Sub-packaging EAN barcode	8015747268615

Part number

CHPX 32 LP



Catalogue drawings



Notes