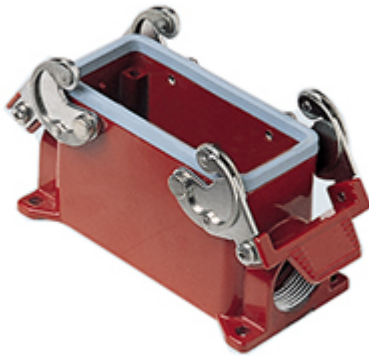


Part number

# CHPR 16



Surface mounting housing, 180 °C series, with 2 levers, Pg21 cable entry, size "77.27"

Product description		Material properties	
<b>Product type</b>	Surface mounting housing	<b>RoHs conformity</b>	Compliant
<b>Series</b>	180 °C	<b>China RoHs - EFUP</b>	E
<b>Closing type</b>	With 2 levers	<b>REACH SVHC substances</b>	No
<b>Size</b>	Size 77.27	<b>Approvals / Standards</b>	
<b>Cable entry</b>	With cable entry Pg21	<b>Certifications</b>	DNV, BV
<b>Technical data</b>		<b>UL</b>	ECBT2
<b>IP degree of protection</b>	IP65 / IP66 / IP69	<b>cUL</b>	ECBT8
<b>Further technical details</b>		<b>General ordering information</b>	
<b>Weight</b>	365,00 g	<b>EAN13 code</b>	8015747023344
<b>Operating temperature range (min, max)</b>	-40°C ... +180°C	<b>eCl@ss 8.1</b>	27440202
		<b>ETIM 7.0</b>	EC000437
		<b>Packaging Information</b>	
		<b>Packaging length</b>	475,00 mm
		<b>Packaging height</b>	180,00 mm
		<b>Packaging width</b>	175,00 mm
		<b>Packaging weight</b>	3,90 kg
		<b>Packaging volume</b>	14,96 dm <sup>3</sup>
		<b>Packaging description</b>	Carton box
		<b>Packaging quantity</b>	10 Pcs
		<b>Packaging EAN code</b>	8015747248037
		<b>Sub-packaging weight</b>	1,95 kg
		<b>Sub-packaging description</b>	Plastic packaging
		<b>Sub-packaging quantity</b>	5 Pcs
		<b>Sub-packaging EAN barcode</b>	8015747248020

Part number

**CHPR 16**



---

Notes