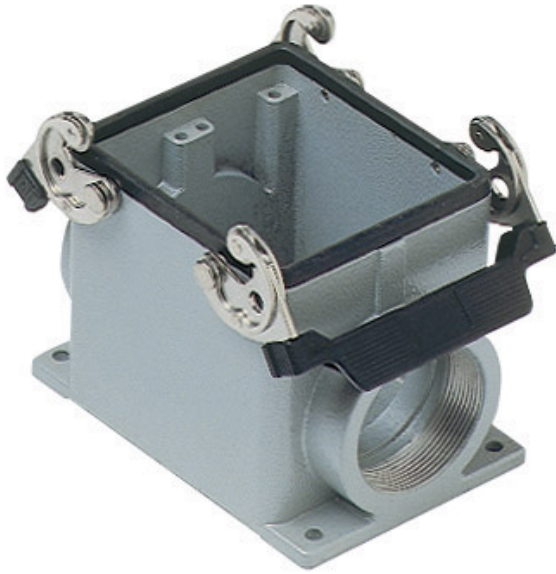


Part number

CHP 32.242



Surface mounting housing, C-TYPE series, with 2 levers, Pg42 x 2 cable entry, size "77.62"

| Product description | | Material properties | |
|-----------------------------------------------|------------------------------|----------------------------------|-------------------------------------------------------|
| Product type | Surface mounting housing | Other materials | Lever: Stainless steel, polyamide (PA) Gasket: NBR |
| Series | C-TYPE | Colour | RAL 7040 grey |
| Closing type | With 2 levers | RoHs conformity | Compliant |
| Size | Size 77.62 | China RoHs - EFUP | E |
| Cable entry | With cable entry Pg42 x 2 | REACH SVHC substances | No |
| Technical data | | Approvals / Standards | |
| IP degree of protection | IP65 / IP66 / IP69 | Certifications | DNV, BV |
| Further technical details | | UL | ECBT2 |
| Weight | 655,00 g | cUL | ECBT8 |
| Operating temperature range (min, max) | -40°C...+125°C | General ordering information | |
| | | EAN13 code | 8015747023023 |
| | | Packaging Information | |
| | | Packaging length | 475,00 mm |
| | | Packaging height | 200,00 mm |
| | | Packaging width | 150,00 mm |
| | | Packaging weight | 2,77 kg |
| | | Packaging volume | 14,25 dm ³ |
| | | Packaging description | Carton box |
| | | Packaging quantity | 4 Pcs |
| | | Packaging EAN code | 8015747140829 |
| | | Sub-packaging length | 116,00 mm |
| | | Sub-packaging height | 113,00 mm |
| | | Sub-packaging width | 142,00 mm |
| | | Sub-packaging weight | 0,69 kg |
| | | Sub-packaging volume | 1,86 dm ³ |
| | | Sub-packaging description | Carton box |
| | | Sub-packaging quantity | 1 Pcs |
| | | Sub-packaging EAN barcode | 8015747023030 |

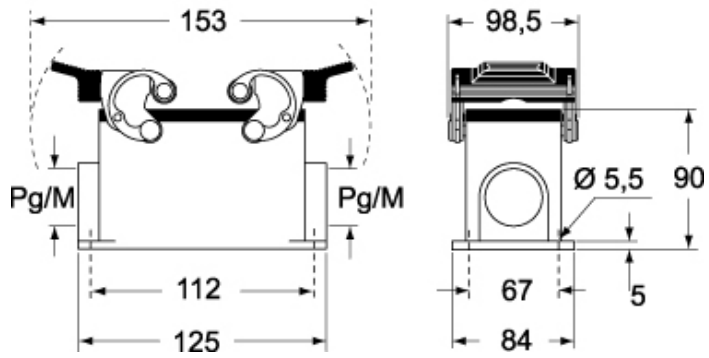
Part number

CHP 32.242



Catalogue drawings

CHP - MHP



Notes