

Part number

CHP 06 L2



Surface mounting housing, C-TYPE series, with 1 lever, Pg16 x 2 cable entry, size "44.27"

Product description		Material properties	
Product type	Surface mounting housing	Other materials	Lever: Stainless steel, polyamide (PA) Gasket: NBR
Series	C-TYPE	Colour	RAL 7040 grey
Closing type	With 1 lever	RoHs conformity	Compliant
Size	Size 44.27	China RoHs - EFUP	E
Cable entry	With cable entry Pg16 x 2	REACH SVHC substances	No
Technical data		Approvals / Standards	
IP degree of protection	IP65	Certifications	DNV, BV
Further technical details		UL	ECBT2
Weight	200,00 g	cUL	ECBT8
Operating temperature range (min, max)	-40°C...+125°C	General ordering information	
		EAN13 code	8015747021487
		Packaging Information	
		Packaging length	475,00 mm
		Packaging height	160,00 mm
		Packaging width	140,00 mm
		Packaging weight	2,15 kg
		Packaging volume	10,64 dm ³
		Packaging description	Carton box
		Packaging quantity	10 Pcs
		Packaging EAN code	8015747021494
		Sub-packaging weight	1,08 kg
		Sub-packaging description	Carton box
		Sub-packaging quantity	5 Pcs
		Sub-packaging EAN barcode	8015747021500

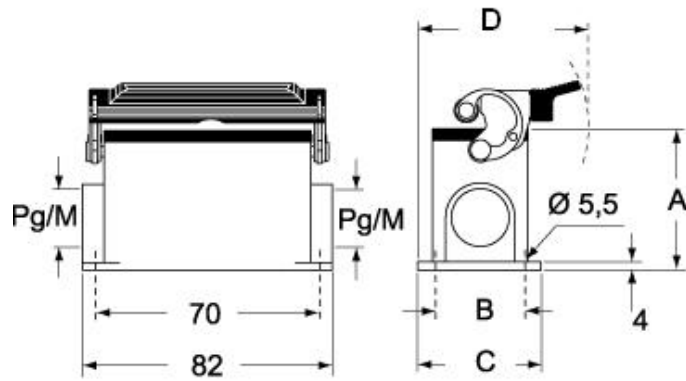
Part number

CHP 06 L2

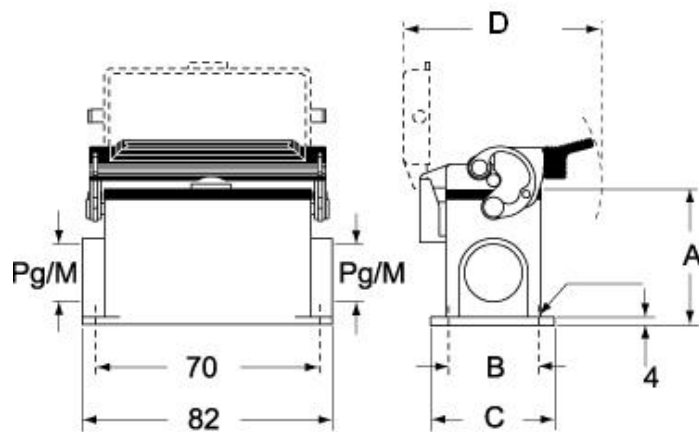


Catalogue drawings

CHP L CAP L - MHP L MAP L



CHP LS CAP LS - MHP LS MAP LS



Notes