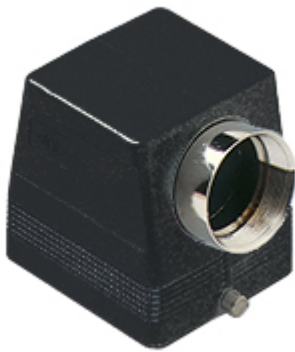


Part number

CHOW 32 L



Hood, W-TYPE series, with 2 pegs, Pg36 side cable entry, size "77.62"

Product description		Material properties	
Product type	Hood	Other materials	Gasket: FKM
Series	W-TYPE	Colour	RAL 9005 black
Closing type	With 2 pegs		Compliant with exemption 6(c): copper alloy containing up to 4% lead by weight
Size	Size 77.62	RoHs conformity	
Cable entry	Side cable entry with adapter Pg36	China RoHs - EFUP	50
Technical data		REACH SVHC substances	Yes Lead
IP degree of protection	IP65 / IP66 / IP69	SCIP number	15deaf78-e939-4401-a0b0-e2228ca32a03
Further technical details		Approvals / Standards	
Weight	417,70 g	Certifications	DNV, BV
Operating temperature range (min, max)	-40°C...+125°C	UL	ECBT2
		cUL	ECBT8
		General ordering information	
		EAN13 code	8015747021319
		Packaging Information	
		Packaging length	370,00 mm
		Packaging height	140,00 mm
		Packaging width	210,00 mm
		Packaging weight	3,49 kg
		Packaging volume	10,88 dm ³
		Packaging description	Carton box
		Packaging quantity	8 Pcs
		Packaging EAN code	8015747021326
		Sub-packaging weight	0,44 kg
		Sub-packaging description	Plastic packaging
		Sub-packaging quantity	1 Pcs
		Sub-packaging EAN barcode	8015747021333

Part number

CHOW 32 L



Notes