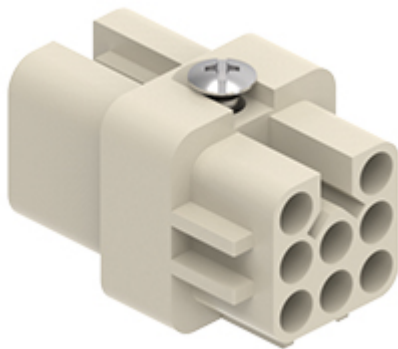



Part number
CDF 07



Female insert, CD series, crimp connection, 7 poles + PE, 10 A 250 V 4 kV 3, size "21.21"

Product description		Material properties	
Product type	Insert	Main material	Polycarbonate (PC)
Series	CD	Colour	RAL 7032 grey
Connection type	Crimp connection		Compliant with exemption 6(c): copper alloy containing up to 4% lead by weight
Gender	Female	RoHs conformity	
N. of poles	7 poles + 	China RoHs - EFUP	50
Size	Size "21.21"	REACH SVHC substances	Yes Lead
Specification	Standard & HNM (High Number of Matings)	SCIP number	5a97d67d-dd49-45fe-94c0-411f951ef5ee
Technical data		Approvals / Standards	
Current	10 A	Reference standard	EN 61984:2009-06
Voltage	250 V	Certifications	CSAc, CQC, DNV, BV, EAC
Rated impulse withstand voltage	4 kV	UL	ECBT2
Pollution degree	3	cUL	ECBT8
Rated voltage according to UL/CSA	600 V	General ordering information	
IP degree of protection	IP20 without enclosure, IP44/IP66/IP67/IP68/IP69 with enclosure	EAN13 code	8015747014274
Further technical details		eCl@ss 8.1	27440205
Characteristics according to EN 61984	10A 250V 4kV 3; 10A 230/400V 4kV 2	ETIM 7.0	EC000438
Mating cycles	≥ 500	Packaging Information	
Insulation resistance	≥ 10 GΩ	Packaging length	210,00 mm
Contact resistance	≤ 3 mΩ	Packaging height	200,00 mm
Weight	9,00 g	Packaging width	130,00 mm
Operating temperature range (min, max)	-40 °C ... +125 °C	Packaging weight	2,09 kg
Conductors stripping length	8 mm (6 mm for 2,5 mm ²)	Packaging volume	5,46 dm ³
UL 94 flammability rating	V-0	Packaging description	Carton box
Tightening torque for PE connection	M4: 1,2 Nm; 10,6 lb.in (Ph2 or 1,0x5,5mm)	Packaging quantity	200 Pcs
Tightening torque for fixing screws	M3: 0,5 Nm; 4,4 lb.in (Ph1 or 0,8 x 5,5 mm)	Packaging EAN code	8015747103169
		Sub-packaging length	197,00 mm
		Sub-packaging height	35,00 mm
		Sub-packaging width	113,00 mm
		Sub-packaging weight	0,42 kg
		Sub-packaging volume	0,78 dm ³
		Sub-packaging description	Carton tray
		Sub-packaging quantity	40 Pcs
		Sub-packaging EAN barcode	8015747103176

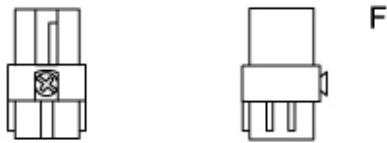
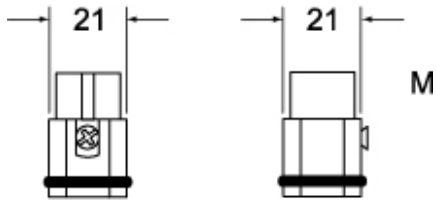
Part number

CDF 07



Catalogue drawings

CDM 07 (N)

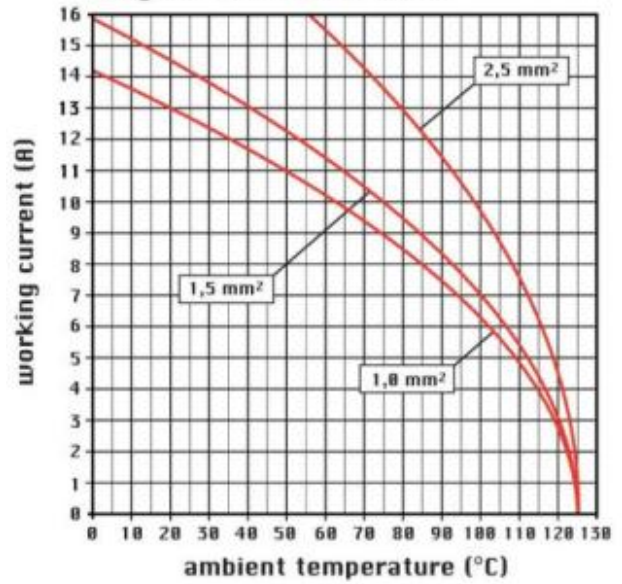


CDF 07 (N)



Catalogue drawings

diagram CD 07 and 08 poles



Notes