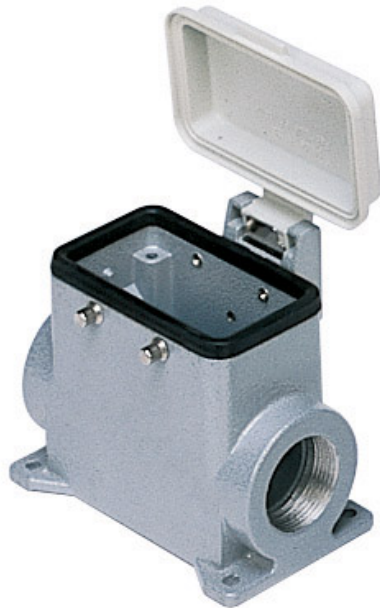


Part number

# CAP 10 CP29



Surface mounting housing, C-TYPE series, with 4 pegs, Pg29 cable entry, size "57.27", high construction, with plastic cover

## Product description

|                      |                                       |
|----------------------|---------------------------------------|
| <b>Product type</b>  | Surface mounting housing              |
| <b>Series</b>        | C-TYPE                                |
| <b>Closing type</b>  | With 4 pegs                           |
| <b>Size</b>          | Size 57.27                            |
| <b>Cable entry</b>   | With cable entry<br>Pg29              |
| <b>Specification</b> | High construction, with plastic cover |

## Technical data

**IP degree of protection** IP65

## Further technical details

|   |                |
|---|----------------|
| <b>Weight</b>                                 | 280,00 g       |
| <b>Operating temperature range (min, max)</b> | -40°C...+125°C |

## Material properties

|                              |               |
|------------------------------|---------------|
| <b>Other materials</b>       | Gasket: NBR   |
| <b>Colour</b>                | RAL 7040 grey |
| <b>RoHs conformity</b>       | Compliant     |
| <b>China RoHs - EFUP</b>     | E             |
| <b>REACH SVHC substances</b> | No            |

## Approvals / Standards

|                       |         |
|-----------------------|---------|
| <b>Certifications</b> | DNV, BV |
| <b>UL</b>             | ECBT2   |
| <b>cUL</b>            | ECBT8   |

## General ordering information

**EAN13 code** 8015747007559

## Packaging Information

|                                  |                       |
|----------------------------------|-----------------------|
| <b>Packaging length</b>          | 475,00 mm             |
| <b>Packaging height</b>          | 200,00 mm             |
| <b>Packaging width</b>           | 150,00 mm             |
| <b>Packaging weight</b>          | 3,21 kg               |
| <b>Packaging volume</b>          | 14,25 dm <sup>3</sup> |
| <b>Packaging description</b>     | Carton box            |
| <b>Packaging quantity</b>        | 10 Pcs                |
| <b>Packaging EAN code</b>        | 8015747236225         |
| <b>Sub-packaging weight</b>      | 1,61 kg               |
| <b>Sub-packaging description</b> | Plastic packaging     |
| <b>Sub-packaging quantity</b>    | 5 Pcs                 |
| <b>Sub-packaging EAN barcode</b> | 8015747104203         |

Part number

# CAP 10 CP29



Catalogue drawings

## CHP CAP - MHP MAP



## CHP CS/CP CAP CS/CP - MHP CS/CP MAP CS/CP



|                 | A  | B  | C  |
|-----------------|----|----|----|
| CHP L / MHP L   | 57 | 40 | 52 |
| CAP L / MAP L   | 73 | 45 | 57 |
| CHP CS / MHP CS | 57 | 40 | 52 |
| CAP CS / MAP CS | 73 | 45 | 57 |
| CHP CP / MHP CP | 57 | 40 | 52 |
| CAP CP / MAP CP | 73 | 45 | 57 |

Notes