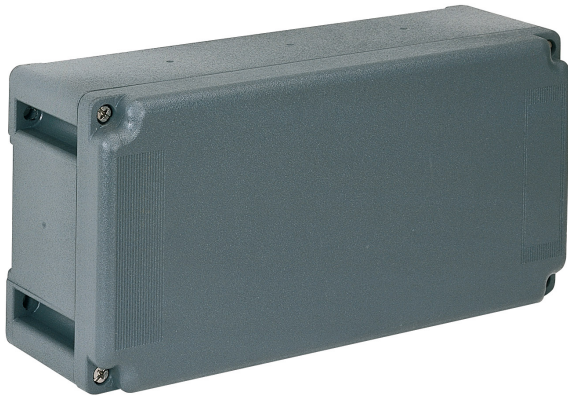


Part number

# TM 2314 DB



Box, TM series, with fixed cover, for 2 TM 1145 TB plates

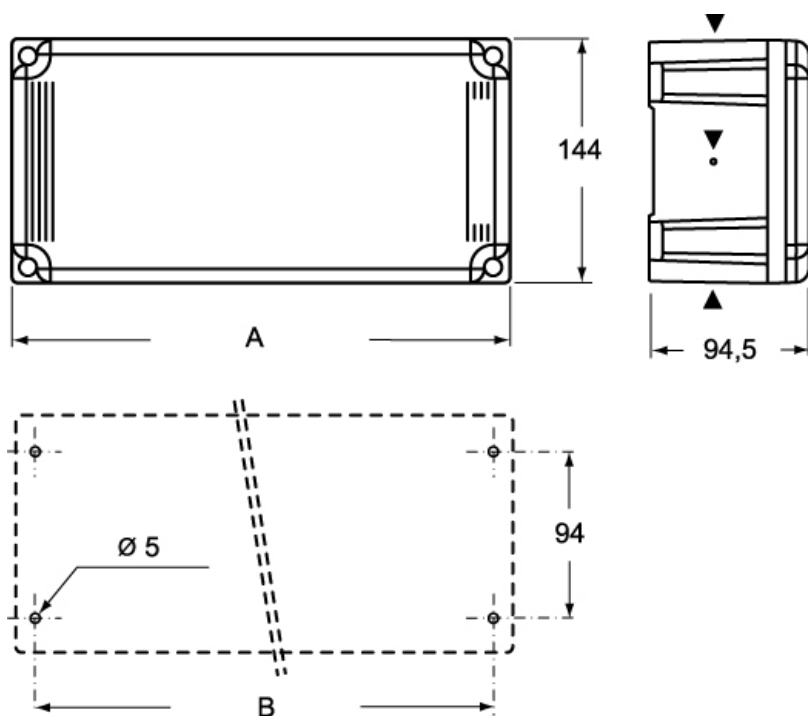
Product description		Material properties	
<b>Product type</b>	Box	<b>Colour</b>	RAL 7012 grey
<b>Series</b>	TM		Compliant with exemption 6(c): copper alloy containing up to 4% lead by weight
<b>Specification</b>	With fixed cover For 2 TM 1145 TB plates	<b>RoHs conformity</b>	
<b>Technical data</b>		<b>China RoHs - EFUP</b>	50
<b>IP degree of protection</b>	IP66 / IP67		Yes
<b>Further technical details</b>		<b>REACH SVHC substances</b>	Lead
<b>Weight</b>	680,00 g	<b>SCIP number</b>	B0214dad-d2d9-4e91-a5b4-f4c9b4612083
<b>Operating temperature range (min, max)</b>	-25°C ... +40°C	<b>General ordering information</b>	
<b>IK rating (impact degree of protection)</b>	IK10	<b>EAN13 code</b>	8015747101417
		<b>Packaging Information</b>	
		<b>Packaging length</b>	245,00 mm
		<b>Packaging height</b>	165,00 mm
		<b>Packaging width</b>	215,00 mm
		<b>Packaging weight</b>	1,36 kg
		<b>Packaging volume</b>	8,69 dm <sup>3</sup>
		<b>Packaging description</b>	Carton box
		<b>Packaging quantity</b>	2 Pcs
		<b>Packaging EAN code</b>	8015747101615
		<b>Sub-packaging weight</b>	0,68 kg
		<b>Sub-packaging description</b>	Plastic packaging
		<b>Sub-packaging quantity</b>	1 Pcs
		<b>Sub-packaging EAN barcode</b>	8015747101608

Part number

# TM 2314 DB



Catalogue drawings



	<b>A</b>	<b>B</b>
<b>TM 2314 DB</b>	230	213
<b>TM 2614 DB</b>	260	243
<b>TM 2914 DB</b>	290	273