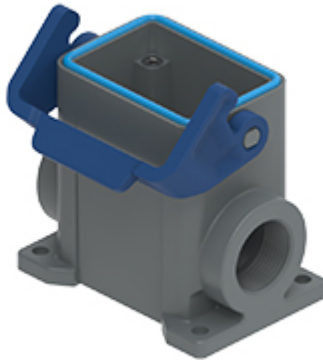


Part number

TAPC 06 L25



Surface mounting housing, T-TYPE/C series,
with 1 lever, M25 cable entry, size "44.27"

Product description

| | |
|---------------------|--------------------------|
| Product type | Surface mounting housing |
| Series | T-TYPE/C |
| Closing type | With 1 lever |
| Size | Size 44.27 |
| Cable entry | With cable entry M25 |

Technical data

IP degree of protection IP66 / IP69

Further technical details

| | |
|---|-----------------|
| Weight | 135,00 g |
| Operating temperature range (min, max) | -50°C ... +70°C |

Material properties

| | |
|------------------------------|--|
| Main material | Polypropylene (PP) |
| Other materials | Lever: Polypropylene (PP) Gasket: Silicone rubber |
| Colour | RAL 7012 grey, RAL 5005 blue |
| RoHs conformity | Compliant |
| China RoHs - EFUP | E |
| REACH SVHC substances | No |

General ordering information

| | |
|-------------------|---------------|
| EAN13 code | 8015747211925 |
| eCl@ss 8.1 | 27440202 |
| ETIM 7.0 | EC000437 |

Packaging Information

| | |
|----------------------------------|-----------------------|
| Packaging length | 180,00 mm |
| Packaging height | 210,00 mm |
| Packaging width | 330,00 mm |
| Packaging weight | 2,94 kg |
| Packaging volume | 12,47 dm ³ |
| Packaging description | Carton box |
| Packaging quantity | 20 Pcs |
| Packaging EAN code | 8015747212007 |
| Sub-packaging weight | 0,74 kg |
| Sub-packaging description | Plastic packaging |
| Sub-packaging quantity | 5 Pcs |
| Sub-packaging EAN barcode | 8015747212014 |

Part number

TAPC 06 L25



Catalogue drawings

