


Part number

SQV 1643.5



Interlocked switched socket-outlet, SQV series, 2 poles + PE, 4 h (yellow), 16 A, 100 ÷ 130 V, sectionable fuse carrier 10 x 38 mm

Product description	
Product type	Interlocked switched socket-outlet
Series	SQV
N. of poles	2 poles + 
Clock position	4
Size	Socket fixing centre distance 88 x 230 mm
Specification	Sectionable fuse carrier 10 x 38 mm
Technical data	
Current	16 A
Voltage	100 ÷ 130 V
IP degree of protection	IP55
Further technical details	
Weight	605,00 g
Operating temperature range (min, max)	-25°C ... +40°C
IK rating (impact degree of protection)	IK08

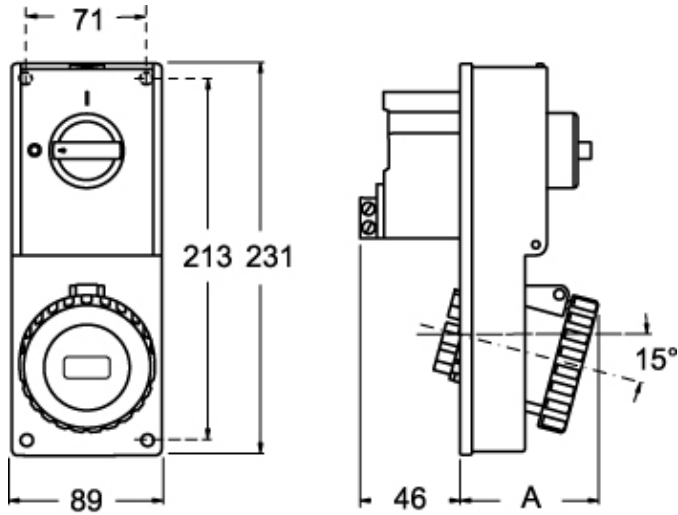
Material properties	
Colour	RAL 7035 grey, RAL 1021 yellow
RoHs conformity	Compliant with exemption 6(c): copper alloy containing up to 4% lead by weight
China RoHs - EFUP	50
REACH SVHC substances	Yes Lead
SCIP number	F6799547-ab84-42f2-938f-233ba663766d
Approvals / Standards	
Reference standard	EN 60309-1, -2 e -4
General ordering information	
EAN13 code	8015747087414
Packaging Information	
Sub-packaging length	116,00 mm
Sub-packaging height	103,00 mm
Sub-packaging width	230,00 mm
Sub-packaging weight	0,61 kg
Sub-packaging volume	2,75 dm ³
Sub-packaging description	Carton box
Sub-packaging quantity	1 Pcs
Sub-packaging EAN barcode	8015747087421

Part number

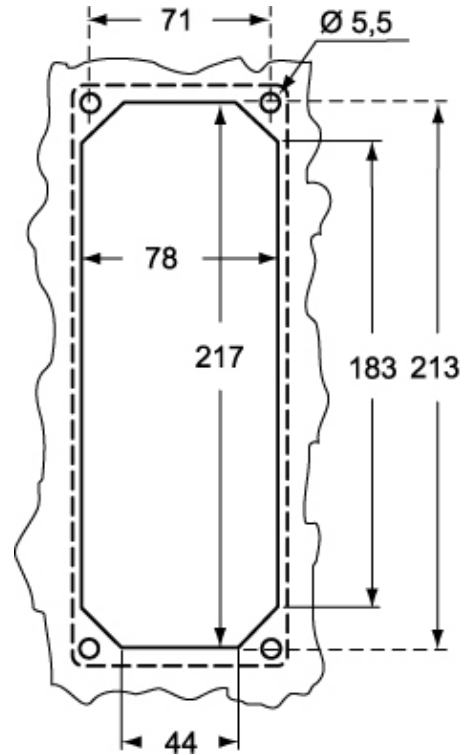
SQV 1643.5



Catalogue drawings



Catalogue drawings



SQV.5		A
16A	2P+⊕	67
	3P+⊕	67
	3P+N+⊕	70