


Part number

SQE 3295



Interlocked switched socket-outlet, SQE series, 3 poles + N + PE, 9 h (blue), 32 A, 120/208 ÷ 144/250 V, without fuse-carrier

Product description	
Product type	Interlocked switched socket-outlet
Series	SQE
N. of poles	3 poles + N + 
Clock position	9
Size	Socket fixing centre distance 88 x 230 mm
Specification	Without fuse-carrier
Technical data	
Current	32 A
Voltage	120/208 ÷ 144/250 V
IP degree of protection	IP44
Further technical details	
Weight	630,00 g
Operating temperature range (min, max)	-25°C ... +40°C
IK rating (impact degree of protection)	IK08

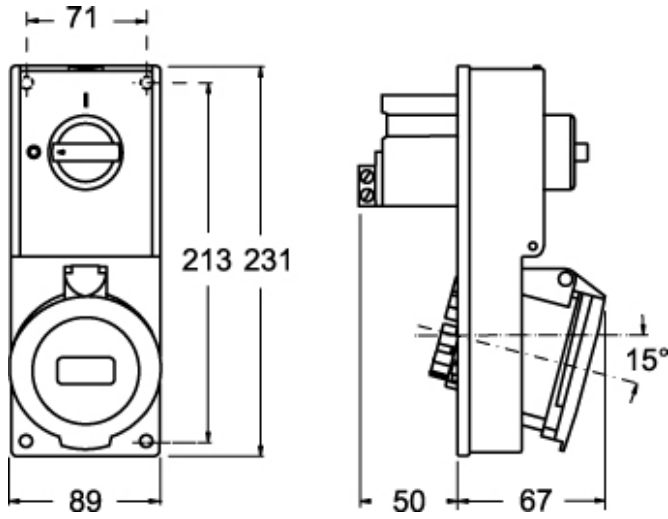
Material properties	
Colour	RAL 7035 grey, RAL 5015 blue
RoHs conformity	Compliant with exemption 6(c): copper alloy containing up to 4% lead by weight
China RoHs - EFUP	50
REACH SVHC substances	Yes Lead
SCIP number	Ce861c8d-b979-403b-96d9-80aef6dc281d
Approvals / Standards	
Reference standard	EN 60309-1, -2 e -4
General ordering information	
EAN13 code	8015747087155
Packaging Information	
Packaging length	380,00 mm
Packaging height	250,00 mm
Packaging width	295,00 mm
Packaging volume	28,03 dm ³
Packaging description	Carton box
Packaging quantity	9 Pcs
Packaging EAN code	8015747279444
Sub-packaging description	Plastic packaging
Sub-packaging quantity	1 Pcs
Sub-packaging EAN barcode	8015747109437

Part number

SQE 3295



Catalogue drawings



Catalogue drawings

