


Part number

SQE 3275.5



Interlocked switched socket-outlet, SQE series, 3 poles + N + PE, 7 h (black), 32 A, 277/480 ÷ 288/500 V, without fuse-carrier

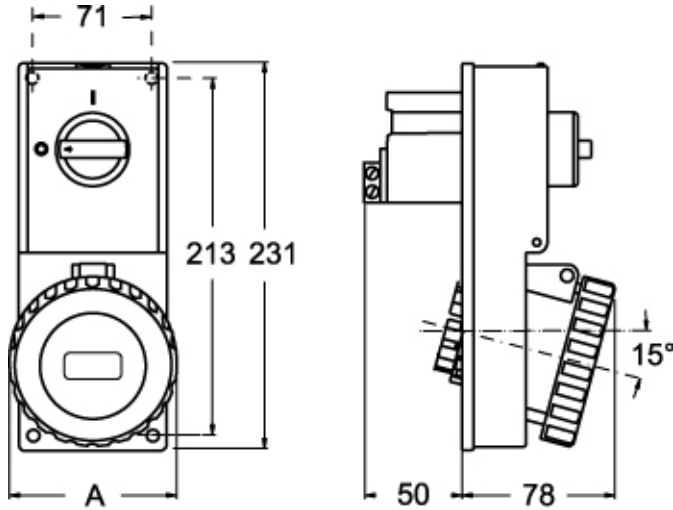
Product description		Material properties	
Product type	Interlocked switched socket-outlet	Colour	RAL 7035 grey, RAL 9005 black
Series	SQE	Approvals / Standards	
N. of poles	3 poles + N + 	Reference standard	EN 60309-1, -2 e -4
Clock position	7	General ordering information	
Specification	Without fuse-carrier	EAN13 code	8015747087001
Technical data		Packaging Information	
Current	32 A	Sub-packaging weight	0,69 kg
Voltage	277/480 ÷ 288/500 V	Sub-packaging description	Carton box
IP degree of protection	IP55	Sub-packaging quantity	1 Pcs
Further technical details		Sub-packaging EAN barcode	8015747109406
Weight	690,00 g		
Operating temperature range (min, max)	-25°C ... +40°C		
IK rating (impact degree of protection)	IK08		

Part number

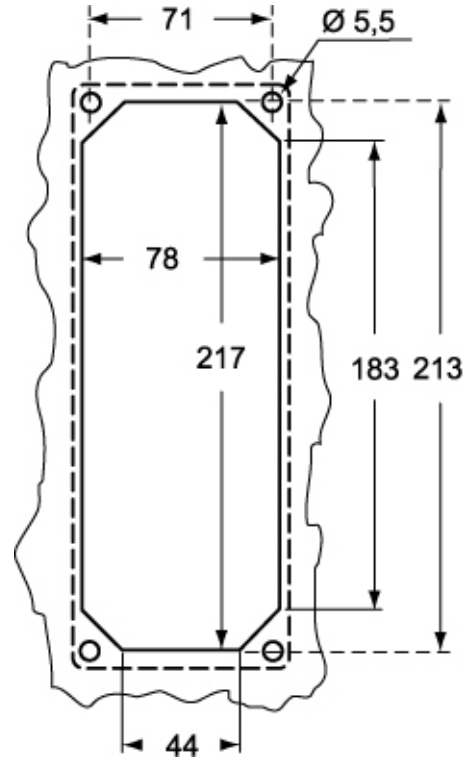
SQE 3275.5



Catalogue drawings



Catalogue drawings



SQE.5		A
32A	2P+⊕	92
	3P+⊕	92
	3P+N+⊕	100