


Part number

# SQE 3245



Interlocked switched socket-outlet, SQE series, 3 poles + N + PE, 4 h (yellow), 32 A, 57/100 ÷ 75/130 V, without fuse-carrier

#### Product description

<b>Product type</b>	Interlocked switched socket-outlet
<b>Series</b>	SQE
<b>N. of poles</b>	3 poles + N + 
<b>Clock position</b>	4
<b>Size</b>	Socket fixing centre distance 88 x 230 mm
<b>Specification</b>	Without fuse-carrier

#### Technical data

<b>Current</b>	32 A
<b>Voltage</b>	57/100 ÷ 75/130 V
<b>IP degree of protection</b>	IP44

#### Further technical details

<b>Weight</b>	630,00 g
<b>Operating temperature range (min, max)</b>	-25°C ... +40°C
<b>IK rating (impact degree of protection)</b>	IK08

#### Material properties

<b>Colour</b>	RAL 7035 grey, RAL 1021 yellow
---------------	--------------------------------

#### Approvals / Standards

<b>Reference standard</b>	EN 60309-1, -2 e -4
---------------------------	---------------------

#### General ordering information

<b>EAN13 code</b>	8015747086530
-------------------	---------------

#### Packaging Information

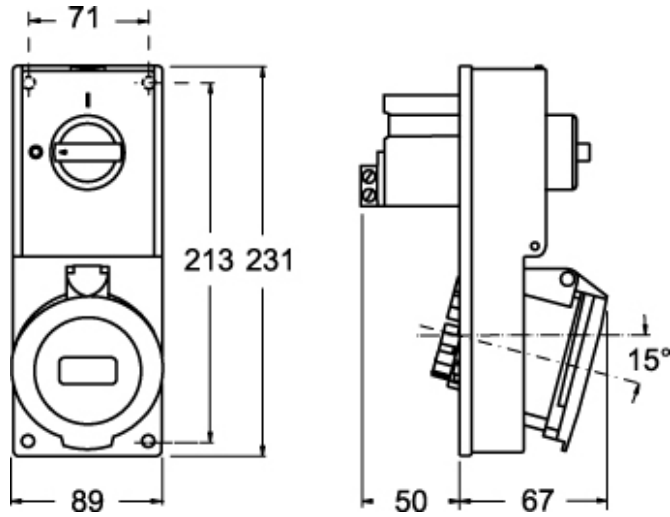
<b>Sub-packaging weight</b>	0,63 kg
<b>Sub-packaging description</b>	Carton box
<b>Sub-packaging quantity</b>	1 Pcs
<b>Sub-packaging EAN barcode</b>	8015747109369

Part number

# SQE 3245



Catalogue drawings



Catalogue drawings

